





## VOCO – THE DENTALISTS

Modern dentistry demands dental products of top material quality and user-friendliness. This calls for practice-oriented and efficient solutions. We at VOCO pursue exactly these goals. We see ourselves as “Dentalists”, i.e. specialists for dental materials. With this in mind, we focus on this one area of activity and concentrate all our efforts on the service to dentistry.

Since 1981, VOCO has been supplying dental practitioners all over the world with high-quality dental materials and today ranks among the internationally leading manufacturers in this sector. With our comprehensive range of over 100 quality products we supply dental practices and laboratories in over 100 countries with pharmaceuticals and medical devices “Made in Germany” for preventive, restorative and prosthetic dentistry.

Thanks to a certified quality management system and intensive research and development work, VOCO has again and again been able to set new standards in the development of innovative dental materials. For this purpose, VOCO researchers are involved in an active exchange of ideas and information with over 150 universities and other renowned research establishments throughout the world. The know-how of VOCO’s scientific experts is rated very highly. For instance, VOCO has already played a leading part in several research projects sponsored by the German Federal Ministry of Education and Research (BMBF).

Product innovations have repeatedly made VOCO a pioneer in the world of dentistry, as in the case of Grandio®, the first nano-hybrid composite worldwide, which advanced to become one of the internationally most successful universal restoratives due to its excellent material and handling properties. And in Grandio®SO VOCO presents a nano-hybrid composite for all classes of cavity which, thanks to its physical parameters, is considered one of the most tooth-like restoratives.

The VOCO range comprises temporary and permanent restoratives and lining materials of different material classes, adhesives and luting materials, root posts and core build-up systems, impression materials, materials for the fabrication of temporary crowns and bridges, fissure sealants, preparations for fluoridation and desensitisation, as well as laboratory products and devices.

VOCO presents its current product range in this catalogue and hopes to provide you with useful inspiration and ideas for clinical practice.



## ORAL CARE

### Whitening

Perfect Bleach	6
Perfect Bleach Office+	7

### Fissure sealing

Fissurit FX	8
Fissurit F	8
Fissurit	8
Grandio Seal	9
Control Seal	10

### Desensitiser

VOCO Profluorid Varnish	11
-------------------------	----

### Prophylaxis

Bifluorid 10	12
Remin Pro	13
Admira Protect	13
CleanJoy	14
Klint	14

## DIRECT RESTORATION

### Liner

Calciomol	16
Calciomol LC	16
Amalgam Liner	17
Ionoseal	17
Ionobond	18
Calcicur	18

### Restoratives (Composite)

x-tra base	19
GrandioSO	20
GrandioSO Flow	21
GrandioSO Heavy Flow	22
GrandioSO Inlay System	23
Grandio	24
Grandio Flow	25
Amaris	26
Amaris Flow	27
Amaris Gingiva	27
Admira	28
Admira Flow	29
Admira Bond	29
Polofil Supra	30
Arabesk Top	30
Arabesk	31
Arabesk Flow	31
x-tra fil	32
Alfacomp LC	32

### Restoratives (Compomer)

Twinky Star	33
Twinky Star Flow	33
Glasiosite	33

### Restoratives (Auxiliary devices)

Curvy	34
Dimanto	34

### Restoratives (Glass ionomer material)

Ionolux	35
Easy Glaze	35
VOCO Ionofil Molar AC Quick	36
VOCO Ionofil Molar AC	36
VOCO Ionofil Molar	37
Ionofil Plus	37
Aqua Ionofil Plus	38
Final Varnish LC	38
Argion Molar AC	39
Argion	39

### Restoratives (Auxiliary devices)

GrandTEC	40
----------	----

### Bonding

Futurabond U	41
Futurabond DC	42
Futurabond NR	43
Futurabond M	43
Solobond M	44
Solobond Plus	44

## INDIRECT RESTORATION

### Luting

Bifix SE	46
Bifix QM	47
Meron Plus	48
Aqua Meron	48
Meron Application capsule	49
Meron	49
Fit Test C & B	50
Ceramic Bond	50

### Attachment luting

Quick Up	51
----------	----

### Core build-up

Rebilda DC	52
Rebilda Post	53
Rebilda Post System	53
Rebilda SC	54
Rebilda LC	54
Rebilda Form	54
Grandio Core Dual Cure	55

### Temporaries

Structur Premium	56
Structur 3	57
Structur 2	58
Provicol QM	59
Provicol C	59
Provicol	59

Clip	60
Clip F	60

### Repair

Cimara	61
Cimara Zircon	61

### Denture relining

Ufi Gel hard C	62
Ufi Gel hard	62
Ufi Gel SC	63
Ufi Gel P	63

### Impression

Registrado X-tra	64
Registrado Clear	64

## VARIOUS PRODUCTS

### Others

Individuo Lux	66
Profibase	66
Vococid	67
Caries Marker	67
Pele Tim	68
Block Out Gel LC	68

### Cleaning

Traypurol tabs	69
Traypurol	69
Solvitan	69

### Devices

VOCO Mix 10	70
Celalux 2	70

### Small devices

Caps Dispenser	71
Dispenser type 2	71
Dispenser type 3	71
AC Activator	71
AC Applicator type 1	71
AC Applicator type 2	71

### Disposable articles

Disposable articles	72 / 73
---------------------	---------

Notes	74
Alphabetical Index	75

# Icons

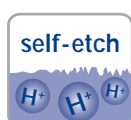
As usual, the VOCO catalogue provides you with comprehensive information on each individual product and offers you a quick and practical overview of the entire product range. You can now find the main product characteristics at a glance: our new icons visualise the core properties, giving you an immediate picture of whether a product is a self-etch or a total-etch bond, whether conditioning is required, or how many seconds a composite needs to be light-cured.

21 different icons enable you to quickly find the right product and make a first assessment and judgement within seconds, which allows you to quickly gain a general overview.



## Material composition

This product is based on nano-hybrid technology.



## Method of application

No separate etching of the tooth surface is required before the adhesive system (bond) is used. For detailed information, please consult the instructions for use.



## Range of shades

This product is available in the number of shades indicated.



## Application of the material

This material is automatically mixed in the correct ratio before application.



## Indications

According to indications, this product is suitable for fillings of the classes of cavity listed. For detailed information, please consult the instructions for use.



## Indications

This product can be used for semi-permanent types of treatment. For detailed information, please consult the instructions for use.



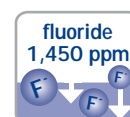
## Curing of the material

This product either cures through exposure to light (LC) or it self-cures chemically (SC). For detailed information, please consult the instructions for use.



## Volume shrinkage

During setting, this product is subject to the volume shrinkage indicated in percent.



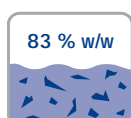
## Fluoride content

This product contains the level of fluorides indicated. For detailed information, please consult the instructions for use.



## Curing of the material

This product self-cures chemically (SC). For detailed information, please consult the instructions for use.



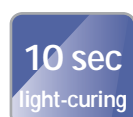
## Filler content

This product has a defined filler content, which is indicated in percent by weight.



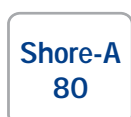
## Material composition

This product contains the ingredient shown.



## Curing of the material

This product cures through exposure to light. The time indicated represents the average time. For detailed information, please consult the instructions for use.



## Hardness of the material

This product possesses the shore A hardness shown.



## Working directions

This product does not require additional polishing when completely cured. For detailed information, please consult the instructions for use.



## Method of application

Preparatory conditioning of the tooth surface is not required before application of this material to the tooth. For detailed information, please consult the instructions for use.



## Radiopacity

After completion of the working process, this material is highly radiopaque. The value shown indicates the radiopacity in percent relating to the aluminium equivalent.



## Material compatibility

This product can be used with the materials indicated. For detailed information, please consult the instructions for use.



## Method of application

Separate etching of the tooth surface is necessary before the adhesive system (bond) is used. For detailed information, please consult the instructions for use.



## Working directions

This material is suitable for so-called bulk fillings with a maximum layer thickness of 4 mm. For detailed information, please consult the instructions for use.



## Application of the material

This material is available in the non-running, non-dripping NDT®-syringe.

A close-up photograph of a dental procedure. A dental mirror is being used to examine the teeth. The teeth are white and healthy. The background is a solid blue color.

## ORAL CARE

**Oral Care – VOCO products for desensitising, fluoridation, prophylaxis and whitening.**

VOCO offers you a broad range of fluoride-containing preparations for prophylaxis.

This includes products for sealing fissures and light-curing desensitisers as well as fluoride varnishes for multiple application areas. The range of products is rounded off with a complete whitening series, whether in the surgery or at home.

# Perfect Bleach®



## Whitening gel for discoloured teeth (10 % / 16 % carbamide peroxide)

3.5 %  
H<sub>2</sub>O<sub>2</sub>

/

6 %  
H<sub>2</sub>O<sub>2</sub>

### Indications

Gentle and permanent tooth whitening for vital and non-vital teeth e.g. in cases of staining due to medication, fluorosis, food, trauma, ageing etc.

### Advantages

- Simple user-friendly application
- Gentle on tooth substance and existing restorations
- Significant whitening effect already after a short time
- Pleasant menthol flavour
- Set in attractive cosmetic bag

### Mini set

An attractive cosmetic bag contains four syringes of whitening gel, the storage box and the graphically-assisted instructions for use.

### Especially suitable for

- Dental practitioners who contract an external laboratory to fabricate the tray
- Patients who already own a whitening tray

### Set

The set contains six syringes of whitening gel, the storage box, one syringe of Block Out Gel LC, the material for two trays and the grafically assisted instructions for use.

### Especially suitable for

- Dental practitioners who fabricate the whitening gel tray in their own surgery

Presentation 10 %		Presentation 16 %	
REF 1658	Mini set 10 % – whitening gel syringe 4 × 2.4 ml with 10 % carbamide peroxide, storage box, cosmetic bag	REF 1659	Mini set 16 % – whitening gel syringe 4 × 2.4 ml with 16 % carbamide peroxide, storage box, cosmetic bag
REF 1660	Set 10 % – whitening gel syringe 6 × 2.4 ml with 10 % carbamide peroxide, Block Out Gel LC syringe 1.2 ml, material for 2 trays, storage box, cosmetic bag, shade guide	REF 1664	Set 16 % – whitening gel syringe 6 × 2.4 ml with 16 % carbamide peroxide, Block Out Gel LC syringe 1.2 ml, material for 2 trays, storage box, cosmetic bag, shade guide
REF 1662	Whitening gel syringe 3 × 2.4 ml 10 % carbamide peroxide	REF 1665	Whitening gel syringe 3 × 2.4 ml 16 % carbamide peroxide



## Perfect Bleach® Office+



Whitening gel for discoloured teeth

35 %  
H<sub>2</sub>O<sub>2</sub>

auto  
mix

### Indications

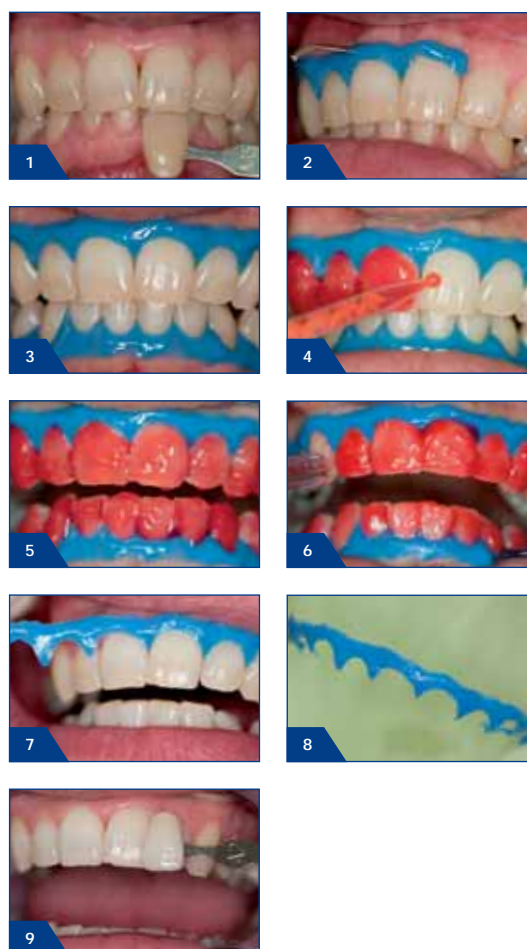
Perfect Bleach Office+ is a gel for whitening teeth and solely appropriate for use in the dental surgery

Perfect Bleach Office+ is suitable for treatment of individual or multiple discoloured vital or devitalised teeth

### Advantages

- 35 % hydrogen peroxide concentration for safe and fast whitening of discolourations
- Good contrast to the tooth and LC Dam due to red coloured material
- Can be used for both internal and external whitening
- Perfect Bleach Office+ in the convenient QuickMix syringe
  - only the amount of gel needed is activated
  - no mixing errors and the gel is always fresh
- Composite-based gingiva protection (LC Dam)
- No painful heat-loading from light-curing the gingiva protection

### Clinical Case



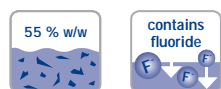
### Presentation

REF 1672	Set whitening gel QuickMix syringe 2 × 4 ml, LC Dam syringe 2 × 2 g, mixing tips type 14, mixing tips type 15, intraoral tips type 1, application cannulae type 41
REF 1673	Whitening gel QuickMix syringe 4 ml, mixing tips type 14, mixing tip type 15, intraoral tip type 1
REF 1655	LC Dam syringe 2 g, application cannulae type 41

## Fissurit® FX



Highly filled light-curing fissure sealant with fluoride, white



### Indications

Sealing of fissures and occlusal surfaces for caries prophylaxis  
Sealing of extended fissures  
Filling of small cavities

### Advantages

- Filler content of 55 % w/w for outstanding abrasion proofness
- Quick and easy application from the direct-application syringe with bendable metal cannulae
- Optimal flow properties
- High stability and good adhesion to enamel
- Perfect marginal adaptation
- Continuous fluoride release
- White for easy visual control

### Presentation

REF 1181 Syringe 2 × 2.5 g, application cannulae type 40

## Fissurit® F



Light-curing fissure sealant with fluoride, white



### Indications

Sealing of pits, fissures and occlusal surfaces for caries prophylaxis  
Facing of damaged enamel surfaces  
Anchoring of orthodontic appliances  
Sealing of composite and cement fillings (protection against moisture)  
Restoration of small carious lesions  
Repair of small defects in composite and amalgam fillings

### Advantages

- Quick and direct application from the non-dripping NDT®-syringe
- White for application control
- Excellent flow properties and low viscosity
- High stability and good adhesion to enamel
- Perfect marginal adaptation
- Continuous fluoride release

### Presentation

REF 1180 Bottle 2 × 3 ml  
REF 1292 Syringe 2 × 2 g, application cannulae type 40  
REF 1293 Set syringe 5 × 2 g, Vococid gel syringe 5 ml, Vococid liquid bottle 2 × 3 ml, accessories

## Fissurit®



Light-curing fissure sealant, transparent

### Indications

See Fissurit F

### Advantages

- Transparent
- High stability and good adhesion to enamel
- Clinically proven for years

### Presentation

REF 1082 Bottle 2 × 3 ml



## Grandio® Seal



Light-curing nano-hybrid fissure sealant



### Indications

- Sealing / filling of pits and fissures
- Sealing / facing of damaged enamel surfaces
- Covering of caries predilection sites during orthodontic treatments
- Sealing composite or cement fillings (protective layer against humidity)
- Sealing of deciduous teeth

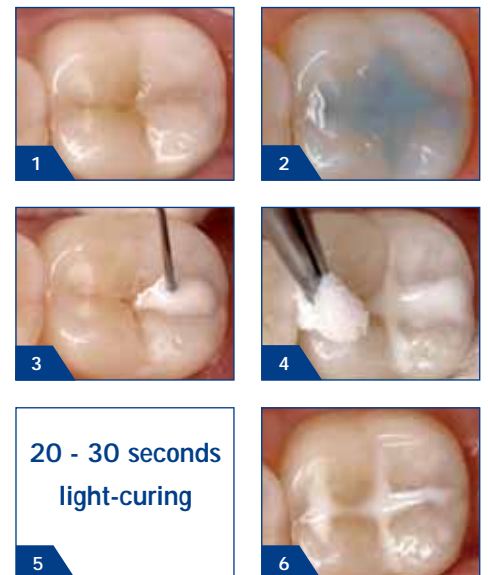
### Advantages

- Use of nano-fillers for optimal flow behaviour
- With 70 % w/w highest filler content in its class
- Outstanding physical properties
  - low abrasion
  - high transverse strength
  - extremely low shrinkage values
- Excellent handling
- Optimal wetting
- Perfect marginal adaptation

### Grandio® Seal in the NDT®-syringe

- NDT® means non-dripping-technology
- Especially suited for fine-flowing materials
- Can be dosed and applied with precision
- Without any loss of material

### Fissure sealing with Grandio® Seal



Source: Dr. Marcelo Balsamo, São Paulo / Brazil

### Presentation

- |          |   |
|----------|---|
| REF 1060 | Set syringe 5 × 2 g, Vococid gel syringe 5 ml, application cannulae type 45 |
| REF 1061 | Syringe 2 × 2 g, application cannulae type 45                               |

## Control Seal



Highly filled, transparent fissure sealant with fluoride, light-curing



## Indications

- Sealing / filling of pits and fissures
- Sealing / facing of damaged enamel surfaces
- Covering of predilection sites, e.g. within the scope of orthodontic treatments
- Sealing of composite or glass ionomer fillings (protective layer against moisture)
- Sealing of deciduous teeth
- Extended fissure sealing

## Advantages

- Transparency
  - visual diagnostics
  - laser fluorescence-based caries diagnostics
  - monitoring of caries progression underneath the sealant
- Highly filled
  - high flexural strength
  - high resistance to abrasion
  - high compressive strength
  - low shrinkage

## Clinical Case



Tooth 27 before sealing



Tooth 27 – Laser fluorescence detection



Tooth 27 after sealing



Tooth 27 six months after sealing



Source: Prof. Dr. A. Braun, Marburg University / Germany

## Presentation

- |          |   |
|----------|---|
| REF 1303 | Set syringe 3 × 2 g, Vococid gel syringe 3 × 2 ml, application cannulae type 45 / type 48 |
| REF 1304 | Syringe 2 g, application cannulae type 45   |

## VOCO Profluorid® Varnish



### Fluoride-containing dental desensitising varnish (5 % NaF)



#### Indications

Treatment of hypersensitive teeth

Sealing the dentinal tubules, e.g. for cavity preparations or on sensitive root surfaces

Treatment of cervical areas after professional cleaning and calculus removal

#### Advantages

- Tooth-shaded varnish
- Easy to apply – with excellent adhesion even to wet tooth surfaces
- Four pleasant flavours
- Economical application in thin layers, high yield

#### VOCO Profluorid® Varnish in practical *SingleDose*

- Easy, quick and hygienic
- No additional devices required
- No spilling in any position



#### Presentation

REF 1267 Tube 10 ml melon  
REF 2232 Tube 10 ml caramel

REF 2233 Tube 10 ml cherry  
REF 2234 Tube 10 ml mint

#### *SingleDose*

Flavor	48 × 0.40 ml	50 × 0.25 ml	50 × 0.40 ml	200 × 0.40 ml
Melon	–	REF 1268	REF 1269	REF 1271
Caramel	–	–	REF 2226	REF 2229
Cherry	–	–	REF 2227	REF 2230

Flavor	48 × 0.40 ml	50 × 0.25 ml	50 × 0.40 ml	200 × 0.40 ml
Mint	–	–	REF 2228	REF 2231
Mixed	REF 2225	–	–	–

# Bifluorid 10®



## Fluoride varnish for the treatment of dental hypersensitivity



### Indications

Treatment of hypersensitivity, including

- cervical area and crown margins
- sensitivity after professional cleaning and calculus removal
- tooth surfaces after preparation and / or grinding
- worn occlusal surfaces and teeth carrying clasps
- after injury of the enamel (e.g. fractures, chips)
- sealing cavity margins after restoration, especially after the etching technique has been employed
- as a dentine protection / lining under amalgam fillings

### Advantages

- Immediately desensitising
- Formation of a protective coat against thermal and mechanical influences
- Transparent – no discolouration of teeth
- Special varnish base reinforces long-term effect and deep fluoridation
- Economical and simple – high yield, low cost, fast application
- Dries quickly
- Colophony-free

### Bifluorid 10® in practical *SingleDose*

- Easy, quick and hygienic
- No additional devices required
- No spilling in any position



### Presentation

REF 1615	Bottle 4 g, Solvent bottle 10 ml
REF 1616	Bottle 10 g
REF 1617	Bottle 3 × 10 g, Solvent bottle 10 ml, Pele Tim No. 1
REF 1032	Solvent bottle 10 ml

REF 1618	<i>SingleDose</i> 50 pcs., accessories
REF 1619	<i>SingleDose</i> 200 pcs., accessories

## Remin Pro®



Protective dental care with fluoride and hydroxy apatite



### Indications

- After whitening
- After professional cleaning
- Prevention and control of hypersensitivities
- During orthodontic treatments

### Advantages

- Contains fluoride (1,450 ppm), hydroxy apatite and xylitol
- Provides a balanced oral flora and thus protects the teeth against harmful acid attacks
- Strengthens the teeth after whitening and professional cleaning
- Cariostatic properties from the contained xylitol
- Available in three aromatic flavours (melon, mint and strawberry)
- Can be used daily and especially well-suited for use at home
- Simple application

## Admira® Protect



Light-curing Ormocer® based protective desensitiser



### Indications

- Treatment of hypersensitive dentine
- Treatment of cervical areas and crown margins
- Treatment of cervical areas after professional cleaning and calculus removal

### Advantages

- Biocompatible
- Permanent elimination of hypersensitivity
- Reliable adhesion
- Special filler technology for high abrasion resistance
- Fluoride release

### Admira® Protect in practical SingleDose

- Easy, quick and hygienic
- No additional devices required
- No spilling in any position

#### Presentation

REF 2003	Tube 12 × 40 g melon
REF 2004	Tube 12 × 40 g mint
REF 2005	Tube 12 × 40 g strawberry
REF 2006	Tube 12 × 40 g mixed
REF 2007	Tube 3 × 40 g mixed
REF 2126	SingleDose 50 × 2.5 g melon
REF 2127	SingleDose 50 × 2.5 g mint
REF 2128	SingleDose 50 × 2.5 g strawberry

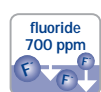
#### Presentation

REF 1650	Bottle 4.5 ml, accessories
REF 1651	SingleDose 50 pcs., accessories
REF 1652	SingleDose 200 pcs., accessories

## CleanJoy®



Prophy paste for professional tooth cleaning and polishing



### Indications

- Removal of soft and hard surface plaque
- Removal of extrinsic discolouration (e.g. staining from coffee, tea or tobacco)
- Polishing of tooth surfaces as part of professional tooth cleaning, prior to whitening or following the removal of orthodontic devices
- Cleaning and polishing of restorations as part of professional tooth cleaning
- Removal of residues of temporary luting material prior to definitive bonding (cementation)

### Advantages

- Stable, homogenous consistency
- No splashing (2,000 - 3,000 r / min)
- Available in three abrasion grades, thus can be individually adjusted to each situation
- Traffic light coding: simple to use without confusion
- Can be used with any conventional instrument (small brush, cup, etc.)
- Contains fluoride (700 ppm)
- Contains xylitol (inhibiting effect on the metabolism of bacteria)
- The green polishing paste has a very low grade of abrasion and is therefore also suitable for the care of implants
- RDA values (measured in accordance with DIN EN ISO 11609)
  - coarse RDA = 195
  - medium RDA = 127
  - fine RDA = 16
- Pleasant light mint flavour

#### Presentation

REF 2092	Tube 100 g coarse
REF 2091	Tube 100 g medium
REF 2090	Tube 100 g fine

## Klint



Fluoride-free paste for professional tooth cleaning and polishing

### Indications

- For manual or mechanical plaque removal
- Tooth cleaning before caries prophylaxis, treatment of hypersensitive cervical areas and composite restorations

### Advantages

- Cleaning particles made of special silicic acid
- Thorough cleaning without damage to enamel
- Pleasant peppermint flavour

#### Presentation

REF 2336	Tube 60 g
----------	-----------





## DIRECT RESTORATION

Direct restoration – VOCO restoratives of the composite, compomer,Ormocer® and glass ionomer material classes.

VOCO's range of restoratives allows the placing of durable and permanent restorations which meet the highest demands. It comprises restoratives and lining materials, bonds and material for surface sealing. Our restoratives are suited for a large variety of indications and individual requirements. We offer universal posterior restoratives as well as highly aesthetic filling materials.

## Calcimol



### Self-curing radiopaque calcium hydroxide paste



#### Indications

Indirect pulp capping  
Lining under all filling materials

#### Advantages

- Effective protection of the pulp
- Easy application
- Suitable working time
- Short setting time
- Contains 26 % calcium hydroxide
- Radiopaque
- Supports the formation of secondary dentine

## Calcimol LC



### Light-curing radiopaque calcium hydroxide paste



#### Indications

Indirect pulp capping  
Lining under all filling materials  
Protection when applying the total-etch technique

#### Advantages

- Effective protection of the pulp
- Ready-to-use one-component material
- Time-saving light-curing and direct application from the non-dripping NDT®-syringe
- Acid-resistant
- Supports the formation of secondary dentine

#### Calcimol LC in the NDT®-syringe

- NDT® means non-dripping-technology
- Especially suited for fine-flowing materials
- Can be dosed and applied with precision
- Without any loss of material

#### Presentation

REF 1097 Tube 2 pcs., base / catalyst

#### Presentation

REF 1047 Tube 2 × 5 g  
REF 1307 Syringe 2 × 2.5 g, application cannulae type 41

## Amalgam Liner



Ready-to-use insulating varnish with atomised silver under amalgam fillings

contains  
silver



### Indications

Dentine sealing under amalgam fillings  
Sealing of cements before applying amalgam  
Sealing of amalgam fillings immediately after application

### Advantages

- Effective protection of the pulp
- Insulation against chemical and bacterial influences
- Reduces the risk of leakage and secondary caries
- Binds excess mercury

## Ionoseal®



Light-curing glass ionomer composite liner



### Indications

Lining under all types of filling material  
Extended fissure sealing  
Restoration of smaller lesions

### Advantages

- Ready-to-use one-component material
- Time-saving: light-curing in seconds
- Quick and hygienic application
- High compressive strength (226 MPa)
- Fluoride release against secondary caries
- High biocompatibility
- Radiopaque

### Ionoseal® in the NDT®-syringe

- NDT® means non-dripping-technology
- Especially suited for fine-flowing materials
- Can be dosed and applied with precision
- Without any loss of material

#### Presentation

REF 1024 Set bottle 4.5 g with Solvent  
REF 1026 Bottle 9 g

#### Presentation

REF 1126 Tube 2 × 4 g  
REF 1326 Syringe 3 × 2.5 g, application cannulae type 41

## Ionobond



Glass ionomer lining material with bonding effect



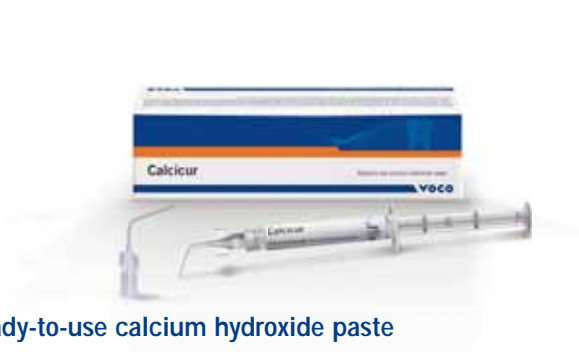
### Indications

Linings

### Advantages

- Excellent chemical adhesion to dentine and enamel
- High biocompatibility
- Fluoride release
- High compressive strength
- Low solubility
- Tooth-like thermal expansion

## Calcicur®



Ready-to-use calcium hydroxide paste



### Indications

Indirect capping for the treatment of caries profunda

Direct capping when the pulp is opened or a pulpotomy is performed

Lining of cavities to prevent exposure to acid media when using cements

For temporary filling of root canals

### Advantages

- Suitable for use under any lining or restorative material
- Immediately ready for use
- Antimicrobial effect due to high pH value (12.5)
- Calcium hydroxide content of 45 %
- Radiopacity
- Promotes the formation of tertiary dentine
- Effective pulp protection

#### Presentation

REF 1083 Powder / liquid (10 g / 15 ml)

#### Presentation

REF 1093 Syringe 2.5 g, application cannulae type 47

# x-tra base®



## Flowable light-curing base composite



### Indications

Base in class I and II cavities  
Cavity lining under direct restorative materials in class I and II cavities  
Small, non occlusal stress-bearing class I restorations according to minimally invasive filling therapy  
Class III and V restorations  
Extended fissure sealing  
Undercut blockout  
Repair of small enamel defects  
Repair of small defects in aesthetic indirect restorations  
Repair of temporary C&B-materials  
Core build-up

### Advantages

- 4 mm restoration base in one simple step
- Cures reliably in only 10 seconds (shade universal)
- Perfect surface affinity for outstanding adaption
- Low shrinkage stress
- High radiopacity (350 %AI)
- Self-levelling
- Can be combined with any methacrylate-based bonding or composite
- The non-dripping NDT®-syringe or convenient Flow-Caps with bendable metal cannulae ensure a reliable, precisely accurate application
- Also available in shade A2

### Application



A fully prepared cavity



Coating of the cavity walls with Futurabond DC



Start at the deepest point in the cavity ...



... and fill up to 4 mm with x-tra base



Apply a 2 mm occlusal layer of GrandioSO



Finished restoration

### Presentation

REF 1790 Syringe 2 × 2 g universal  
REF 1791 Syringe 2 × 2 g A2

REF 1794 Caps 16 × 0.25 g universal  
REF 1795 Caps 16 × 0.25 g A2

# Grandio® SO



## Universal nano-hybrid restorative material



### Indications

Fillings of class I to V cavities  
 Reconstruction of traumatically damaged anteriors  
 Facetting of discoloured anteriors  
 Correction of shape and shade for improved aesthetic appearance  
 Locking, splinting of loosened teeth  
 Repairing veneers  
 Restoration of deciduous teeth  
 Core build-up under crowns  
 Composite inlays

### Advantages

- Toothlike restorative for reliable restorations
- Very high filler content of 89 % w/w
- All-purpose for the highest demands in both the anterior and posterior tooth regions
- Excellent light resistance
- Optimal coordination of opacity and translucency for results that mirror the natural tooth using only one shade
- Intelligent shade system with new shades GA3.25 and GA5 that make sense for every clinical situation
- Smooth consistency, non-sticky, best sculptability
- Easily polishes to a high gloss – lasting, smooth surface
- Compatible with all conventional bonds

### Presentation

REF 2600	Set syringe 5 × 4 g (A2, A3, A3.5, GA3.25, GA5), shade guide			REF 2640	Set Caps 80 × 0.25 g (16 each of A2, A3, A3.5, GA3.25, GA5), shade guide			
REF 2601	Set + bond syringe 5 × 4 g (A2, A3, A3.5, GA3.25, GA5), shade guide + Futurabond NR <i>SingleDose</i> 50 pcs., accessories			REF 2641	Set + bond Caps 80 × 0.25 g (16 each of A2, A3, A3.5, GA3.25, GA5), shade guide + Futurabond NR <i>SingleDose</i> 50 pcs., accessories			
REF 2607	Shade guide							
Shade	Syringe 4 g	Caps 16 × 0.25 g	Shade	Syringe 4 g	Caps 16 × 0.25 g	Shade	Syringe 4 g	Caps 16 × 0.25 g
A1	REF 2610	REF 2650	B2	REF 2620	REF 2660	OA3.5	REF 2633	REF 2673
A2	REF 2611	REF 2651	B3	REF 2621	REF 2661	BL	REF 2635	REF 2675
A3	REF 2612	REF 2652	C2	REF 2624	REF 2664	GA3.25	REF 2613	REF 2653
A3.5	REF 2614	REF 2654	D3	REF 2627	REF 2667	GA5	REF 2616	REF 2656
A4	REF 2615	REF 2655	OA1	REF 2630	REF 2670			
B1	REF 2619	REF 2659	OA2	REF 2631	REF 2671			



## Grandio®SO Flow



Flowable universal nano-hybrid restorative material



### Indications

Fillings of class I to V cavities  
Minimally invasive filling therapy  
Extended fissure sealing  
Blocking out undercuts  
Lining or coating cavities  
Repairing fillings and veneers  
Luting translucent prosthetic pieces (e.g., full ceramic crowns, etc.)  
Interlocking and splinting teeth (e. g., with glass fibre strands)  
Use as a base material in combination with glass fibres or similar products for fabricating semi-permanent crowns and bridges

### Advantages

- Medium viscous flow composite, i.e. outstanding flow behaviour with complete wetting of the cavity walls
- Universal application – for indication-appropriate treatment of all cavity classes
- Physical properties superior to those of various other packable materials, e.g. hardness, stability, abrasion resistance
- Very high filler content of over 80 % w/w
- Safe and precise application
- 13 shades for aesthetic restorations – perfectly coordinated with GrandioSO
- High shade stability
- Very good polishability and durable brilliance
- Extremely high radiopacity (500 %Al) of the shade WO for especially good contrast to the tooth substance and to other restoratives
- Available in the non-dripping NDT®-syringe and Flow-Caps with flexible metal cannulae

### Presentation

REF 2720 Set syringe 5 × 2 g (A1, A2, A3, A3.5, WO), shade guide, accessories  
REF 2607 Shade guide

Shade	Syringe 2 × 2 g	Caps 16 × 0.25 g	Shade	Syringe 2 × 2 g	Caps 16 × 0.25 g	Shade	Syringe 2 × 2 g	Caps 16 × 0.25 g
A1	REF 2722	REF 2742	B1	REF 2729	REF 2749	BL	REF 2736	–
A2	REF 2723	REF 2743	B2	REF 2730	–	WO	REF 2737	–
A3	REF 2724	REF 2744	C2	REF 2732	–	GA5	REF 2727	–
A3.5	REF 2725	REF 2745	I	REF 2733	–			
A4	REF 2726	REF 2746	OA2	REF 2734	–			

# Grandio®SO Heavy Flow



Flowable universal nano-hybrid restorative material – highly viscous



## Indications

Fillings of class I to V cavities  
Minimally invasive filling therapy  
Extended fissure sealing  
Blocking out undercuts  
Lining or coating cavities  
Repairing fillings and veneers  
Luting translucent prosthetic pieces (e.g., full ceramic crowns, etc.)  
Interlocking and splinting teeth (e.g., with glass fibre strands)  
Use as a base material in combination with glass fibres or similar products for fabricating semi-permanent crowns and bridges

## Advantages

- Increased stability in comparison to conventional flowables, i.e. no undesirable runoff
- Universal application – for indication-appropriate treatment of all cavity classes
- Physical properties superior to those of various other packable materials, e.g. hardness, stability, abrasion resistance
- Very high filler content of 83 % w/w
- Precise application with complete wetting of the cavity walls
- Precise dosing without excess for time-saving work
- Undercuts, approximal boxes and paragingival areas can be easily filled
- Ideal for use in combination with GrandTEC
- 12 shades for aesthetic restorations – perfectly coordinated with GrandioSO
- High shade stability
- Very good polishability and durable brilliance
- Available in the non-dripping NDT®-syringe and Flow-Caps with flexible metal cannulae

## Presentation

REF 2680 Set syringe 5 × 2 g (A2, A3, A3.5, WO, GA5), shade guide, accessories  
REF 2607 Shade guide

Shade	Syringe 2 × 2 g	Caps 16 × 0.25 g	Shade	Syringe 2 × 2 g	Caps 16 × 0.25 g	Shade	Syringe 2 × 2 g	Caps 16 × 0.25 g
A1	REF 2684	REF 2704	A4	REF 2688	REF 2708	OA2	REF 2693	–
A2	REF 2685	REF 2705	B1	REF 2690	REF 2712	BL	REF 2695	–
A3	REF 2686	REF 2706	B2	REF 2691	–	WO	REF 2696	–
A3.5	REF 2687	REF 2707	C2	REF 2692	–	GA5	REF 2689	–

## Grandio®SO Inlay System

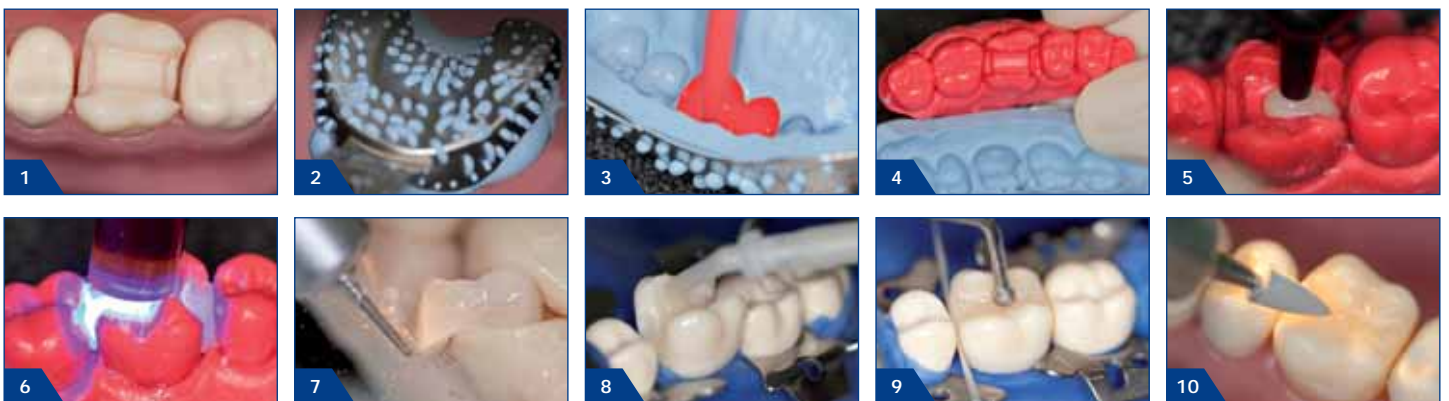


Set for chairside fabrication of indirect composite inlays

### Advantages

- Complete set for chairside fabrication of 15 composite inlays
  - full added value retained in the practice, no laboratory involvement
  - less expensive than CAD / CAM fabricated inlays
- Highest-quality, perfectly coordinated components
  - quick and simple fabrication of models
  - the premium composite GrandioSO guarantees durability and aesthetics
  - Futurabond DC and Bifix QM for secure bonding and luting
- Simple and efficient method
  - easy and convenient to fabricate, even for large multisurface restorations
  - fabrication of a row of inlays for treatment of neighbouring teeth
  - creation of approximal contacts without having to use the time-consuming and expensive matrix technique
  - perfect occlusal anatomy – modelled extraorally
  - stress-free fabrication of tooth-coloured and durable restorations, even in patients who are reluctant to comply or non-compliant

### Application



### Presentation

- |          |  |
|----------|--|
| REF 2642 | Set cartridge 3 × 50 ml die silicone, GrandioSO Caps 15 × 0.25 g (5 each A2, A3, A3.5), Futurabond DC <i>SingleDose</i> 15 pcs., QuickMix syringe Bifix QM 10 g universal, Dimanto set (one each of small point, large point, small cup, large cup, lens), accessories |
| REF 1186 | Die silicone – cartridge 2 × 50 ml, mixing tips type 20  |



## Universal nano-hybrid restorative material



### Indications

Class I to V fillings  
Reconstruction of traumatically affected anteriors  
Facetting of discoloured anteriors  
Correction of shape and shade for better aesthetic appearance  
Locking, splinting of loose anteriors  
Repairing veneers  
Filling deciduous teeth  
Core-build-up under crowns  
Composite inlays

### Advantages

- Excellent physical properties for long-lasting restorations
- Significantly lower polymerisation shrinkage than conventional composites
- High filler content of 87 % w/w
- Extremely high abrasion resistance
- High transverse strength
- Smooth consistency for convenient handling
- Excellent aesthetics
- Can be used with all dentine / enamel bonding agents
- Available in 16 shades
- Shade guide made from original material

### Presentation

REF 1800 Set syringe 5 × 4 g (A1, A2, A3, A3.5, B2), shade guide  
REF 1801 Set + bond syringe 5 × 4 g (A1, A2, A3, A3.5, B2), shade guide + Futurabond NR *SingleDose* 50 pcs., accessories  
REF 1899 Shade guide

REF 1830 Set Caps 50 × 0.25 g (10 each A1, A2, A3, A3.5, B2), shade guide  
REF 1831 Set + bond Caps 50 × 0.25 g (10 each A1, A2, A3, A3.5, B2), shade guide + Futurabond NR *SingleDose* 50 pcs., accessories

Shade	Syringe 4 g	Caps 20 × 0.25 g	Shade	Syringe 4 g	Caps 20 × 0.25 g	Shade	Syringe 4 g	Caps 20 × 0.25 g
A1	REF 1810	REF 1840	B2	REF 1815	REF 1845	I	REF 1820	REF 1850
A2	REF 1811	REF 1841	B3	REF 1816	REF 1846	OA2	REF 1821	REF 1851
A3	REF 1812	REF 1842	C2	REF 1817	REF 1847	OA3.5	REF 1822	REF 1852
A3.5	REF 1813	REF 1843	C3	REF 1818	REF 1848	BL	REF 1823	REF 1853
A4	REF 1814	REF 1844	D2	REF 1825	REF 1855			
B1	REF 1824	REF 1854	D3	REF 1819	REF 1849			

## Grandio® Flow



Flowable universal nano-hybrid restorative material



### Indications

- Filling small class I cavities
- Extended fissure sealing
- Blocking-out of undercuts
- Lining, coating of cavities (CBF technique, lining technique)
- Restorations class II to V
- Repair of fillings and veneers
- Luting of translucent prosthetic pieces (e.g. porcelain-only crowns, veneers)

### Grandio® Flow in the NDT®-syringe

- NDT® means non-dripping-technology
- Especially for fine-flowing materials
- Can be dosed and applied precisely
- Without any loss of material

### Advantages

- Optimal flowability
- High filler content of 80 % w/w
- Exact shade match to Grandio
- Excellent wetting properties
- Microhybrid composite – like physical properties
- Significantly lower polymerisation shrinkage than conventional flowables
- Very good abrasion resistance
- High transverse strength
- Can be used with all conventional bonding agents
- The shades BL (bleach light) and WO (white opaque) fulfil special indications: Bleach light is suited for bleached teeth and for use in paediatric dentistry. The shade white opaque makes an ideal restoration base on e.g. discoloured dentine areas and in core build-up

### Presentation

REF 1860	Set syringe 8 × 2 g (A1, 2 × A2, 2 × A3, A3.5, B2, OA2), shade guide
REF 1861	Set + bond syringe 8 × 2 g (A1, 2 × A2, 2 × A3, A3.5, B2, OA2), shade guide + Futurabond NR <i>SingleDose</i> 50 pcs., accessories

REF 1877	Set Caps 40 × 0.25 g (8 each A1, A2, A3, A3.5, OA2), shade guide
REF 1878	Set + bond Caps 40 × 0.25 g (8 each A1, A2, A3, A3.5, OA2), shade guide + Futurabond NR <i>SingleDose</i> 50 pcs., accessories
REF 1899	Shade guide

Shade	Syringe 2 × 2 g	Caps 20 × 0.25 g	Shade	Syringe 2 × 2 g	Caps 20 × 0.25 g	Shade	Syringe 2 × 2 g	Caps 20 × 0.25 g
A1	REF 1863	REF 1880	A4	REF 1868	REF 1884	D2	REF 1874	–
A2	REF 1864	REF 1881	B1	REF 1869	REF 1885	OA2	REF 1870	REF 1889
A3	REF 1865	REF 1882	B2	REF 1867	REF 1886	BL	REF 1871	–
A3.5	REF 1866	REF 1883	C2	REF 1873	REF 1887	WO	REF 1872	REF 1891



## Highly aesthetic light-curing restorative material



### Indications

Aesthetic restoration of class III, IV and V cavities in anterior teeth  
 Aesthetic restoration of class I, II and V cavities in posterior teeth  
 Reconstruction of traumatically damaged anterior teeth  
 Direct and indirect composite veneers and facing of discoloured anterior teeth  
 Shape and shade correction for improved aesthetics  
 Repairing highly aesthetic porcelain, e.g. veneers  
 Splinting of anterior teeth

### Advantages

- Two simple steps, perfect results
- Layering like in nature: shades are created from the inside of the tooth
- Simple and precise shade match
- Natural shade transitions automatically
- Natural aesthetics can be achieved with only 11 shades in a simple layer technique
- Easy to learn, fast aesthetic results
- Intuitive approach, no preconceived shades
- Non-sticky consistency is ideal for modelling and shaping
- Long resistance to ambient and chair light
- Optimal polishability
- Natural fluorescence and high colour stability
- Good chameleon effect for invisible restorations

### Presentation

REF 1930	Set syringe 8 × 4 g (O1, O2, O3, O4, O5, TL, TN, TD), Amaris Flow syringe 2 × 1.8 g (HT, HO), accessories
REF 1931	Set + bond syringe 8 × 4 g (O1, O2, O3, O4, O5, TL, TN, TD), Amaris Flow syringe 2 × 1.8 g (HT, HO) + Futurabond NR <i>SingleDose</i> 50 pcs., accessories
REF 1950	Set Caps 128 × 0.25 g (16 each O1, O2, O3, O4, O5, TL, TN, TD), Amaris Flow syringe 2 × 1.8 g (HT, HO), accessories
REF 1951	Set + bond Caps 128 × 0.25 g (16 each O1, O2, O3, O4, O5, TL, TN, TD), Amaris Flow syringe 2 × 1.8 g (HT, HO) + Futurabond NR <i>SingleDose</i> 50 pcs., accessories
REF 1969	Shade guide

Base shade	Syringe 4 g	Caps 16 × 0.25 g
Opaque, O1	REF 1933	REF 1953
Opaque, O2	REF 1934	REF 1954
Opaque, O3	REF 1935	REF 1955
Opaque, O4	REF 1936	REF 1956
Opaque, O5	REF 1937	REF 1957
Opaque, O Bleach	REF 1938	REF 1958
Enamel shade		
Translucent light, TL	REF 1940	REF 1960
Translucent neutral, TN	REF 1941	REF 1961
Translucent dark, TD	REF 1942	REF 1962



## Amaris® Flow



Flowable, highly aesthetic light-curing restorative material



### Advantages

- The ideal addition to Amaris
- Simple modelling of the incisal edge
- Easy wetting
- Fine cannula allows to apply small amounts

## Amaris® Gingiva



Highly aesthetic light-curing restorative material in gingiva shades



### Indications

Class V restorations (cervical caries, root erosion, V-shaped defects) especially in cases of retreating gingiva e.g. as a result of periodontic disease

Covering of exposed discoloured hypersensitive cervical areas, especially in the visible anterior area

Highly aesthetic correction of malpositions of teeth, for direct veneers, facings and corrections of the red-white aesthetics

### Advantages

- One base shade, combined with three mixable opaquers, can reproduce almost all gingival shades
- Aesthetic and functional solution for cavities and V-shaped defects in cervical areas exposed by gingival recession
- Latest composite technology – Amaris know-how in gingiva shades

#### Presentation

Special shade	Syringe 2 × 1.8 g
High translucent, HT	REF 1945
High opaque, HO	REF 1946

#### Presentation

REF 1970	Set syringe 4 g base shade nature, syringe 3 × 1.2 g opaquers (white, light, dark), accessories
REF 1971	Syringe 4 g nature

# Admira®



Light-curingOrmocer® based restorative material



## Indications

For cavities classes I to V  
Reconstruction of traumatically affected anteriors  
Veneering of discoloured anteriors  
Correction of shape and shade for better aesthetics  
Splinting, locking of teeth  
Repair of veneers  
Core build-up  
Indirect inlays

## Advantages

- Excellent aesthetics
- High biocompatibility
- Proven for years
- Non-sticky, easy modelling, good marginal adaptation
- Lower shrinkage than conventional composites
- Tooth-like thermal expansion behaviour
- Excellent adhesion to dentine and enamel with Admira Bond
- Abrasion-resistant and stable colours

## Presentation

REF 2420 Set syringe 7 × 4 g (A2, A3, A3.5, B2, B3, C2, OA2), Vococid gel syringe 5 ml, Admira Bond bottle 4 ml, shade guide, accessories

REF 2419 Set syringe II 7 × 4 g (3 × A2, 3 × A3, 1 × A3.5), Vococid gel syringe 5 ml, Admira Bond bottle 4 ml, accessories

REF 2431 Set syringe 3 × 4 g (A2, A3, A3.5), Vococid gel syringe 5 ml, Admira Bond bottle 4 ml, accessories

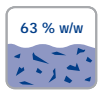
REF 2439 Shade guide

Shade	Syringe 4 g	Caps 25 × 0.25 g	Shade	Syringe 4 g	Caps 25 × 0.25 g	Shade	Syringe 4 g	Caps 25 × 0.25 g	Shade	Syringe 4 g	Caps 25 × 0.25 g
A1	REF 2421	REF 2451	A3.5	REF 2424	REF 2454	B3	REF 2427	REF 2456	BL	REF 2437	–
A2	REF 2422	REF 2452	A4	REF 2425	REF 2458	C2	REF 2428	–	I	REF 2429	–
A3	REF 2423	REF 2453	B2	REF 2426	REF 2455	OA2	REF 2430	–			

## Admira® Flow



Flowable light-curing Ormocer® based restorative material



### Indications

Filling of small cavities  
Fillings with minimally invasive preparation technique  
Extended fissure sealing  
Blocking-out of undercuts  
Lining, coating of cavities (lining technique, CBF-technique)  
Cavity classes III to V  
Repair of composite fillings and veneers  
Luting of full ceramic restorative pieces (porcelain-only-crowns, porcelain inlays)

### Advantages

- Biocompatible and low-shrinkage
- Optimal flowability (thixotropic): highly flowable during application and handling, stable when at rest
- High material elasticity: stress-absorbing lining material
- Translucent and matching the shades of Admira exactly
- Excellent wetting properties
- Available in Caps or syringes with fine, long cannulae
- Time-saving application

## Admira® Bond



One-component dentine and enamel bond Ormocer® based



### Indications

Direct restoration with all types of light-curing restoratives (Ormocer®s, composites, compomers)

### Advantages

- Ormocer® based
- High adhesion and long-lasting marginal tightness
- One component – one layer
- Universal for all light-curing restoratives

#### Presentation

REF 2481 Set syringe 3 × 1.8 g (A2, A3, A3.5), Vococid gel syringe 5 ml, Admira Bond bottle 4 ml, shade guide, accessories

Shade	Syringe 2 × 1.8 g	Caps 25 × 0.25 g
A1	REF 2486	REF 2491
A2	REF 2482	REF 2492
A3	REF 2483	REF 2493
A3.5	REF 2484	REF 2494

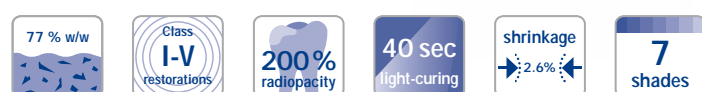
#### Presentation

REF 2432 Bottle 2 × 4 ml  
REF 2479 Bottle 4 ml

## Polofil® Supra



Light-curing micro hybrid restorative material



### Indications

For cavities classes I to V  
Reconstruction of traumatically affected anteriors  
Veneering of discoloured anteriors  
Splinting, locking of teeth

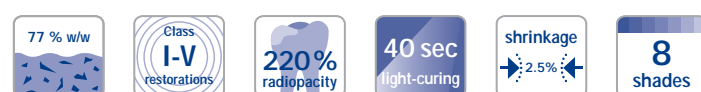
### Advantages

- Combines the advantages of micro-filled and macro-filled composites
- Non-sticky, good packability
- Abrasion-proof and stable shades
- Low shrinkage
- Durable and resistant restorations
- Low water uptake

## Arabesk Top



Light-curing micro hybrid composite restorative material



### Indications

For cavities classes I to V  
Reconstruction of traumatically affected anteriors  
Veneering of discoloured anteriors  
Correction of shape and shade for better aesthetics  
Splinting, locking of teeth  
Specifically suited for composite inlays

### Advantages

- Optimal handling
- Outstanding packability and shaping
- Excellent aesthetics
- Excellent polishability
- Chameleon effect for individual shade adaptation
- Long-lasting fillings
- Low polymerisation shrinkage
- Universal for all cavity classes

### Presentation

REF 1360	Set syringe 7 × 4 g (A1, A2, A3, A3.5, B2, B3, I), Vococid gel syringe 5 ml, Solobond M bottle 4 ml, accessories
REF 1373	Set syringe 3 × 4 g (A2, A3, A3.5), Vococid bottle 3 ml, Solobond M bottle 4 ml, accessories
REF 2107	Shade guide

Shade	Syringe 4 g	Shade	Syringe 4 g
A1	REF 1361	B2	REF 1365
A2	REF 1362	B3	REF 1366
A3	REF 1363	I	REF 1368
A3.5	REF 1364		

### Presentation

REF 1530	Set syringe 7 × 4 g (A2, A3, A3.5, B2, B3, C2, OA2), Vococid gel syringe 5 ml, Solobond M bottle 4 ml, accessories
REF 2108	Shade guide

Shade	Syringe 4 g	Caps 25 × 0.25 g	Shade	Syringe 4 g	Caps 25 × 0.25 g
A1	REF 1532	REF 1556	B2	REF 1537	–
A2	REF 1533	REF 1547	B3	REF 1538	–
A3	REF 1534	REF 1548	C2	REF 1539	–
A3.5	REF 1535	REF 1549	OA2	REF 1541	–

## Arabesk



Light-curing micro hybrid composite with VOCO Sintraglas® multifiller system



### Indications

See Arabesk Top

### Advantages

- High abrasion resistance and stability
- Good packability and shaping
- Good aesthetics and shade adaptation to the tooth
- Excellent polishability
- Universal for all cavity classes

## Arabesk Flow



Flowable light-curing glass-ceramic micro hybrid resin-based dental restorative material



### Indications

Filling of small cavities  
Extended fissure sealing  
Filling of cavities class III to V  
Lining, coating of cavities  
Repairing composite fillings and veneers  
Luting of full ceramic restorative pieces

### Advantages

- Fine-flowing with excellent wetting capability
- Very good aesthetics (chameleon effect)
- Thixotropic properties
- High adhesion with Solobond M
- Precise application
- Economical

### Presentation

REF 1338 Set syringe 7 × 4 g (A1, A2, A3, A3.5, B2, B3, I), Vococid gel syringe 5 ml, Solobond M bottle 4 ml, accessories  
REF 2105 Shade guide

Shade	Syringe 4 g	Shade	Syringe 4 g
A1	REF 1339	B2	REF 1343
A2	REF 1340	B3	REF 1344
A3	REF 1341	I	REF 1346
A3.5	REF 1342		

### Presentation

Shade	Syringe 3 g	Caps 25 × 0.25 g
A2	REF 1563	REF 1560
A3	REF 1564	REF 1561
A3.5	REF 1565	REF 1562

## x-tra fil®



Light-curing posterior filling material



### Indications

Restorations class I and II  
Core build-up

### Advantages

- Curing depth 4 mm
- Curing time only 10 s

### Clinical Case



1  
Tooth 26 with an amalgam restoration in need of replacement



2  
The glistening surface indicates excellent wetting with the bond before polymerisation



3  
Modeling the marginal ridge against the matrix



4  
Filling the cavity in 4 mm increments



5  
Filling the palatal cavity



6  
Finished treatment with x-tra fil

Source: Prof. Jürgen Manhart, Munich / Germany

#### Presentation

REF 1739	Syringe 10 × 5 g
REF 1740	Syringe 5 g
REF 1741	Caps 20 × 0.25 g

## Alfacomp LC



Light-curing build-up and restorative material for the posterior tooth area



### Indications

Light-curing, grey-coloured composite for core build-ups and class I and II restorations

### Advantages

- Visible differentiation between restorations and tooth hard substance through grey colouring
- Simple application yet excellent physical properties
- High radiopacity
- Can be used with any light-curing dentine / enamel bonding agent

#### Presentation

REF 1058	Syringe 4 g
----------	-------------



## Twinky Star®



Coloured light-curing compomer restorative material with glitter effect



### Indications

Restoration of deciduous teeth

### Advantages

- Eight attractive colours with glitter effect
- Easy and quick application from Caps
- Outstanding polishability
- Based on the proven VOCO compomer technology
- Shade guide with original material
- Parents can more easily motivate children to see the dentist
- Children overcome their anxiety
- Target group marketing tools available



Coloured Twinky Star fillings in deciduous teeth

### Presentation

REF 1679	Set + bond Caps 40 × 0.25 g + Futurabond M <i>SingleDose</i> 50 pcs., shade guide
REF 1680	Set Caps 40 × 0.25 g in different colours, shade guide
REF 1689	Shade guide

Shade	Caps 25 × 0.25 g	Shade	Caps 25 × 0.25 g
Gold	REF 1681	Green	REF 1685
Silver	REF 1682	Orange	REF 1686
Blue	REF 1683	Lemon	REF 1687
Pink	REF 1684	Berry	REF 1688

### Twinky Star Flow

REF 1693	Syringe 2 g blue	REF 1694	Syringe 2 g pink
----------	------------------	----------	------------------

## Glasiosite®



Light-curing compomer restorative material



### Indications

Restoration of deciduous teeth

Filling of cavities class III and V

Veneering of discoloured anteriors

Long-term temporary restoration of class I and II cavities

Extended pit and fissure sealing

### Advantages

- High abrasion resistance, compressive and transverse strength
- Very good adhesion to dentine and enamel with the self-etch-bond Futurabond NR
- Excellent modelling and polishing properties
- High colour stability and translucency for permanent aesthetics
- Continuous fluoride release

### Presentation

REF 1600	Set Caps 40 × 0.25 g (10 × A3, 10 × A4, 5 × A2, 5 × A3.5, 5 × B3, 5 × C2), Futurabond NR bottle 2 × 4 ml, shade guide, accessories
----------	--

Shade	Caps 25 × 0.25 g	Shade	Caps 25 × 0.25 g
A2	REF 1601	A4	REF 1604
A3	REF 1602	B3	REF 1605
A3.5	REF 1603	C2	REF 1606

## Curvy



**Anatomically shaped interdental wedges for use in filling therapy**

### Indications

Auxiliary device for restorative therapy using matrices of all types  
Separating of teeth for secure approximal contacts

### Advantages

- Sealing, fixing and separating from special shape
- Curved wedge follows the anatomy of the tooth
- Combinable with ring and partial matrices
- Four sizes: small, medium, large and extra large
- Easiest application from fine tip and three-dimensional shape
- Curved base for reduced pressure on the papilla
- Made of plastic: no moisture expansion, splintering or discolouration



Colour coding of the wedges according to size and curve

### Presentation

REF 2060	Set 6 × 52 pcs. mixed
REF 2061	6 × 52 pcs. small
REF 2062	6 × 52 pcs. medium
REF 2063	6 × 52 pcs. large
REF 2064	6 × 52 pcs. extra large

## Dimanto®



**One step diamond polisher for pre- and high-gloss polishing of composites**

for  
NHT  
Composites

### Indications

Pre-polishing and high gloss polishing of finished composite restorations

### Advantages

- Excellent polishing results
- Suitable for all composites – also for those of the latest generation
- Diamond-interspersed for efficient polishing
- Minimised outlay for instruments; pre-polishing and high gloss polishing with only one polisher
- Autoclavable and thus reusable
- Available in five different shapes for precise and individual polishing
- Can be used with or without water cooling

### Presentation

REF 2380	Set 5 pcs. mixed (one each of small point, large point, small cup, large cup, lens)
REF 2381	Small point, 10 pcs.
REF 2382	Large point, 10 pcs.
REF 2383	Small cup, 10 pcs.
REF 2384	Large cup, 10 pcs.
REF 2385	Lens, 10 pcs.

## Ionolux®



Light-curing glass ionomer restorative material



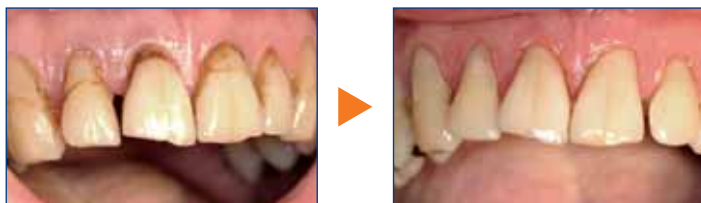
### Indications

Restorations class III and V, especially cervical fillings and root caries  
 Fillings on deciduous teeth  
 Small class I fillings  
 Temporary fillings  
 Core build-up  
 Lining

### Advantages

- Easy to apply, can be modelled immediately
- Does not stick to the instrument
- No conditioning of tooth surfaces before placement of the filling
- No varnish required
- Ideal for Sandwich technique
- Does not flow from the cavity

### Clinical Case



Before

After

Source: Dr. Isma Goltz, Bremen / Germany

### Presentation

REF 1990 Powder / liquid (12 g / 5 ml) A1, mixing pad, accessories  
 REF 1991 Powder / liquid (12 g / 5 ml) A2, mixing pad, accessories  
 REF 1992 Powder / liquid (12 g / 5 ml) A3, mixing pad, accessories

## Easy Glaze®



Nano-filled light-curing coating for surface sealing



### Indications

Surface sealing of glass ionomer cements, provisional crowns and bridges and definitive composite restorations  
 Protecting glass ionomer cement surfaces against the effects of moisture and dehydration immediately after placement  
 Sealing glass ionomer cement liners / build-up restorations before taking impressions  
 Sealing and protecting adhesive interfaces between restoration and tooth structure

### Advantages

- Glossy and aesthetic surfaces
- Easy to use
- Provides protection against discolouration

### In combination with VOCO Ionofil® Molar AC / Quick

- Protects against moisture and dehydration immediately after filling placement
- Tooth-like fluorescence
- Natural gloss

### Presentation

REF 1016 Bottle 5 ml, accessories

## VOCO Ionofil® Molar AC Quick



Glass ionomer restorative material



### Indications

- Class II restoration (non occlusion-bearing)
- Long-term temporary class I and II restoration
- Lining and build-up fillings
- Core build-up
- Restoration of deciduous teeth
- Restoration of V-shaped defects and cervical enamel erosions

### Advantages

- Immediately packable
- Non-sticky consistency
- Very high abrasion resistance, compressive and transverse strength
- 40 % more available cement than from comparable capsules for toothshaded restorations
- Safe adhesion to dentine and enamel
- Stable fillings without marginal gaps
- Continuous high fluoride release
- Radiopaque
- Biocompatible
- Tooth-like aesthetic translucency
- In three shades (A1, A2, A3)
- A setting time of only 2.5 minutes makes VOCO Ionofil Molar AC Quick the perfect material for the treatment of children and impatient patients

## VOCO Ionofil® Molar AC



Glass ionomer restorative material



### Indications

See VOCO Ionofil Molar AC Quick

### Advantages

- 40 % more available material than from comparable capsules for toothshaded restorations
- In three shades (A1, A2, A3)
- More advantages see VOCO Ionofil Molar

#### Presentation

REF 1630	Set application capsules 48 pcs. (8 × A1, 8 × A2, 32 × A3), Final Varnish LC bottle 3 ml
REF 1469	Set application capsules 20 pcs. A3, AC Activator, AC Applicator
REF 1631	Application capsules 48 pcs. A1
REF 1634	Application capsules 48 pcs. A2
REF 1632	Application capsules 48 pcs. A3

#### Presentation

REF 1463	Set application capsules 48 pcs. (8 × A1, 8 × A2, 32 × A3), Final Varnish LC bottle 3 ml
REF 1464	Application capsules 48 pcs. A1
REF 1460	Application capsules 48 pcs. A2
REF 1465	Application capsules 48 pcs. A3

## VOCO Ionofil® Molar



Glass ionomer restorative material



### Indications

Class I restoration (non occlusion-bearing)  
 Long-term temporary class I and II restoration  
 Lining and build-up fillings  
 Core build-up  
 Restoration of deciduous teeth  
 Restoration of V-shaped defects and cervical enamel erosions

### Advantages

- Very good packability
- Non-sticky consistency
- Very high abrasion resistance, compressive and transverse strength
- Good adhesion to dentine and enamel
- Very durable fillings
- Continuous high fluoride release
- Radiopaque
- Biocompatible
- Tooth-like aesthetic translucency

## Ionofil® Plus



Glass ionomer restorative material



### Indications

Restoration of V-shaped defects and cervical enamel erosions  
 Linings  
 Restoration of deciduous teeth  
 Treatment of carious lesions  
 Class III fillings  
 Fissure sealing

### Advantages

- Spreadable consistency
- Good marginal adaptation
- Very good wetting behaviour
- Continuous fluoride release
- Improved glass ionomer technology
- Good aesthetics available in the shades A1, A2, A3, B3

### Presentation

REF 1441	Powder / liquid 3 × 15 g powder (A1, A2, A3), liquid bottle 10 ml, Final Varnish LC bottle 3 ml
REF 1447	Powder 15 g A1
REF 1442	Powder 15 g A2
REF 1443	Powder 15 g A3
REF 1448	Liquid bottle 10 ml

### Presentation

REF 1700	Set application capsules 48 pcs. (8 × A1, 32 × A3, 8 × B3), Final Varnish LC bottle 3 ml
REF 1701	Application capsules 48 pcs. A1
REF 1702	Application capsules 48 pcs. A3
REF 1703	Application capsules 48 pcs. B3
REF 1520	Powder / liquid 3 × 15 g powder (A1, A2, A3), liquid bottle 10 ml, Final Varnish LC bottle 3 ml, accessories
REF 1521	Powder 15 g A1
REF 1525	Powder 15 g A2
REF 1522	Powder 15 g A3
REF 1524	Liquid bottle 10 ml

## Aqua Ionofil Plus



Water-mixable glass ionomer restorative material



### Indications

For restoration of deciduous teeth (especially class I)  
 Repair of V-shaped defects and enamel as well as root erosions in the dental neck area including class V fillings  
 Cavity fillings with carious lesions  
 Fillings of class III and small fillings of class I (incl. extended fissure sealing) as well as core build-up under crowns and as a cavity lining

### Advantages

- Improved glass ionomer technology
- Good aesthetics available in three shades
- Simply mixed with water
- No danger of overacidification
- Spreadable consistency
- Good marginal adaptation

## Final Varnish LC



Light-curing varnish for glass ionomer materials



### Indications

Sealing and smoothening of glass ionomer materials surfaces  
 Protection of cement surfaces against moisture and dehydration

### Advantages

- Permanent protection and safe sealing

#### Presentation

REF 1509	Powder 3 × 15 g (A1, A2, A3), Final Varnish LC bottle 3 ml, accessories
REF 1510	Powder 15 g A1
REF 1513	Powder 15 g A2
REF 1511	Powder 15 g A3
REF 2110	Shade guide

#### Presentation

REF 1241	Bottle 2 × 3 ml
----------	-----------------



## Argion Molar AC



Silver glass ionomer restorative material



### Indications

Core build-up  
Temporary long-term restoration of class I and II cavities  
Build-up fillings and lining  
Restoration of deciduous teeth

### Advantages

- Packable
- Non-sticky consistency
- Highly radiopaque due to fine disperse silver particles
- Very high abrasion resistance, compressive and transverse strength
- Safe adhesion to dentine and enamel
- Continuous high fluoride release

## Argion



Water-mixable silver glass ionomer restorative material for fillings



### Indications

Core build-up  
Restoration of deciduous teeth  
Build-up fillings and lining

### Advantages

- Very good radiopacity
- Continuous fluoride release
- High compressive strength and stability
- Simply mixed with water
- All ingredients pre-dosed in powder form to prevent overacidification

### Presentation

REF 1476 Set application capsules 48 pcs., Final Varnish LC bottle 3 ml

### Presentation

REF 1176 Powder 15 g with dropping bottle

## GrandTEC®



### Resin-impregnated light-curing glass-fibre strands for dental adhesive technique

#### Indications

Stabilisation of teeth

- after orthodontic therapy
- after periodontal therapy

For support in trauma therapy

- locking and splinting avulsed or loosened teeth
- fragment fixation after fracture

For reinforcing / fabricating provisional composite bridges

For temporary treatment after extraction and replacing a missing tooth using an artificial tooth

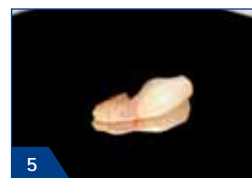
For temporary or semi-permanent treatment of a tooth space using an extracted, natural tooth

For temporary treatment after placing an implant during the osseointegration of the implant

#### Advantages

- Additional product for reinforcing composite / flow composite in traumatology, periodontics, orthodontics, conservative dentistry and prosthodontics

#### Clinical Case



Source: Dr. Walter Denner, treatment of a space after extraction using the extracted tooth and GrandTEC, Fulda / Germany

#### Presentation

REF 1168 Glass fibre strands 5 × 55 mm

REF 1169 Test Kit 5 glass fibre strands 55 mm each, model, application aids, GrandioSO Heavy Flow syringe 2 × 2 g A3, accessories

## Futurabond® U



## Dual-curing universal adhesive



## Indications

Direct and indirect restorations using any light-curing, self-curing or dual-curing methacrylate-based restorative, core build-up or luting composite

Intraoral repair of fillings, ceramic veneers and all-ceramic restorations without additional primer

Treatment of hypersensitive tooth necks

Protective varnish for glass ionomer cement restorations

Sealing of cavities prior to amalgam restorations or prior to temporary luting

Luting of root posts with dual-curing or self-curing luting composites

## Advantages

- One bond for all cases! Makes all other adhesives in the practice redundant!
- Self-etch, selective-etch or total-etch – free choice for the practitioner
- Outstanding versatility of application
  - for direct or indirect restorations
  - fully compatible with all light-curing, dual-curing or self-curing methacrylate-based composites without additional activator for dual-curing
  - secure adhesion to various materials such as metal, zirconium or aluminium oxide, as well as silicate ceramics, without additional primer
  - Treatment of hypersensitive tooth necks
  - Protective varnish for glass ionomer cement restorations etc.
- Applied in one layer – only 35 seconds total working time
- Outstanding adhesion compared to other universal, self or total-etch adhesives
- Moisture tolerant
- Refrigeration not necessary

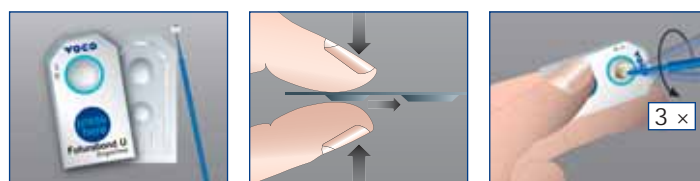
Futurabond® U in practical *SingleDose*

- Easy, quick and hygienic
- No additional devices required
- No spilling in any position



## It's just that easy!

Simply press! Simply bond!



## Presentation

REF 1571	SingleDose 50 pcs., accessories
REF 1572	SingleDose 200 pcs., accessories
REF 1574	SingleDose trial pack (SingleDose 20 pcs., Vococid gel syringe 2 ml, accessories)

# Futurabond® DC



Dual-curing self-etch-bond reinforced with nano-fillers



## Indications

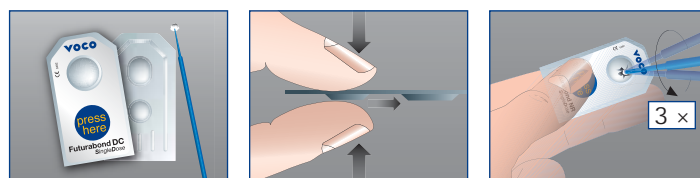
Direct self- or dual-curing composite restorations and core build-ups  
 Direct light-curing restoration with composite-, compomer- andOrmocer® based restoratives  
 Adhesive luting of root pins / posts with dual or self-curing composite cements  
 Indirect restoration when using dual- and self-curing resin cements for luting of inlays, onlays, crowns and bridges

## Advantages

- Chemical-curing with additional DC activator in areas inaccessible with a curing light
- Futurabond DC achieves the same adhesive properties as total-etch preparations without separate etching of the tooth substance
- Moisture-tolerant
- Durable marginal integrity
- Easy and fast application  
– one-coat, one-cure technique
- Contains fluorides
- No refrigerated storage needed
- Ideal for paediatric use

It's just that easy!

Simply press! Simply bond!



## Futurabond® DC in practical *SingleDose*

- Easy, quick and hygienic
- No additional devices required
- No spilling in any position



## Presentation

REF 1163 Bottle 2 x 4 ml (liquid 1 / liquid 2), accessories

REF 1164 *SingleDose* 50 pcs., accessories

REF 1165 *SingleDose* 200 pcs., accessories

## Futurabond® NR



Light-curing self-etch-bond reinforced with nano-fillers



### Indications

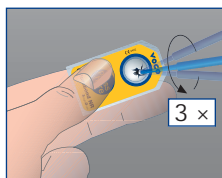
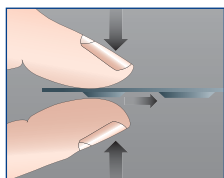
Direct restoration of all cavity classes with all light-curing restoratives (especially nano-composites)  
Treatment of dentine hypersensitivity

### Advantages

- Excellent adhesion to dentine and enamel
- Durable marginal integrity
- Moisture-tolerant
- Easy and fast application
  - one-coat, one-cure technique
- Universal for all light-curing restoratives
- Ideal for paediatric use
- Contains fluorides
- No refrigerated storage needed

It's just that easy!

Simply press! Simply bond!



## Futurabond® M



One-component light-curing nano-reinforced self-etch bond



### Indications

Direct restoration for all cavity classes with all light-curing restoratives

### Advantages

- Excellent adhesion to dentine and enamel
- Easy and fast application
  - one-coat, one-cure technique
- Universal for all light-curing restoratives
- Ideal for paediatric use

### Futurabond® M in practical SingleDose

- Easy, quick and hygienic
- No additional devices required
- No spilling in any position



### Presentation

REF 1148	Bottle 2 x 4 ml (liquid A / liquid B), accessories
REF 1152	SingleDose 50 pcs., accessories
REF 1153	SingleDose 200 pcs., accessories

### Presentation

REF 1350	Bottle 5 ml, accessories
REF 1351	Bottle 3 x 5 ml
REF 1352	SingleDose 50 pcs., accessories
REF 1353	SingleDose 200 pcs., accessories

## Solobond M



Light-curing one-component dentine and enamel bond



### Indications

Direct restoration of all cavity classes with all light-curing restoratives in total-etch technique

### Advantages

- One component – one application
- Excellent adhesion
- High material elasticity and permanently tight margins
- “Stick-immediately-effect” for easy application of the restorative
- Universal for all light-curing restoratives

## Solobond Plus



Light-curing dentine and enamel bond



### Indications

Direct restoration with composite restoratives for all cavity classes  
Adhesive luting of crowns, bridges, inlays, onlays and veneers with resin cements

For light-curing, dual-curing and self-curing composites

### Advantages

- Quick and time-saving application
- Can be used with or without dentine etching
- Two-component system optimised for dentine and enamel
- “Stick-immediately-effect” for simple application and modelling
- Universal for all restoratives

### Presentation

REF 1225 Set bottle 4 ml, Vococid gel syringe 5 ml, accessories  
REF 1226 Bottle 2 × 4 ml

### Presentation

REF 1044 Set primer / adhesive bottle 2 × 4 ml, Vococid gel syringe 5 ml, accessories  
REF 1048 Primer bottle 4 ml  
REF 1049 Adhesive bottle 4 ml





## INDIRECT RESTORATION

**Indirect restoration – VOCO's materials for luting, temporaries and core build-up.**

VOCO offers a wide range of materials for luting indirect restorative pieces. This comprises resin-reinforced glass ionomer materials and luting composites. Impression materials and highly aesthetic materials allow you the fabrication of temporaries which meet the highest demands. The product range also includes intelligent complete solutions for post-endodontic post-and-core build-up.

# Bifix® SE



## Dual-curing self-adhesive composite-based luting system



### Indications

Definitive luting of inlays, onlays, crowns and bridges made from ceramic, zirconia, composite and / or metal  
Definitive luting of metal, ceramic and fibre-reinforced posts in the root canal

### Advantages

- No etching, no bonding
- Short intraoral setting time
- Easiest excess removal
- Very low water solubility
- Excellent adhesion to all restoration surfaces, including zirconia
- No mixing errors
- Excellent biocompatibility
- Available in a choice of three colours



1 - 2 sec. 180 - 240 sec.



**Easy excess removal during gel-phase.**  
Tack-cure Bifix SE using the curing light for 1 - 2 seconds per surface. The excess gel-like material is easily removeable, e.g. with a scaler.

### Presentation

REF 1784	Set QuickMix syringe 3 × 5 g (universal, transparent, white-opaque), mixing tips type 14, mixing tips type 15 (for intraoral tip type 1), intraoral tips type 1
REF 1785	QuickMix syringe 5 g universal, mixing tips type 14 and 15, intraoral tips type 1
REF 1786	QuickMix syringe 5 g transparent, mixing tips type 14 and 15, intraoral tips type 1
REF 1787	QuickMix syringe 5 g white-opaque, mixing tips type 14 and 15, intraoral tips type 1

## Bifix® QM



Dual-curing universal composite-based luting system



## Indications

Permanent adhesive luting of inlays, onlays, crowns, bridges, Maryland bridges, veneers, pins and posts

## Advantages

- For all materials (metal, composite inlays and ceramic, also zirconia)
- Bubble-free perfect mixing
- Direct application
- Excellent adhesion to dentine, enamel and to metals
- Special one-step Ceramic Bond for optimal adhesion to porcelain
- Radiopaque
- Available in three shades
- Try-In pastes simplify shade selection before cementation
- All-in-one set

Also for zirconia

## Presentation

REF 1764	Expert set – QuickMix syringe 3 × 10 g (universal, transparent, white-opaque), mixing tips type 11, intraoral tips type 4, Try-In syringe 3 × 1.2 g (universal, transparent, white-opaque), application cannulae type 41, Ceramic Bond bottle 5 ml + Futurabond DC <i>SingleDose</i> 50 pcs., accessories
REF 1760	Set QuickMix syringe 3 × 10 g (universal, transparent, white-opaque), mixing tips type 11, intraoral tips type 4, Try-In syringe 3 × 1.2 g (universal, transparent, white-opaque), application cannulae type 41, Ceramic Bond bottle 5 ml, accessories
REF 1761	Try-In syringe 1.2 g universal, accessories
REF 1762	Try-In syringe 1.2 g transparent, accessories
REF 1763	Try-In syringe 1.2 g white-opaque, accessories
REF 1217	Set QuickMix syringe 10 g U (universal), Futurabond DC bottle 4 ml each liquid 1 and 2, Ceramic Bond bottle 5 ml, mixing tips type 11, intraoral tips type 4, accessories
REF 1218	QuickMix syringe 10 g universal, mixing tips type 11, intraoral tips type 4, accessories
REF 1219	QuickMix syringe 10 g transparent, mixing tips type 11, intraoral tips type 4, accessories
REF 1759	QuickMix syringe 10 g white-opaque, mixing tips type 11, intraoral tips type 4, accessories
REF 1106	Ceramic Bond bottle 5 ml

## Meron Plus



### Resin reinforced glass ionomer luting cement



#### Indications

##### Luting of:

- porcelain-fused-to-metal crowns, bridges on hard dental tissue and on cores rebuilt with amalgam, composites or glass ionomer materials
- metal inlays, onlays, crowns and bridges
- root posts
- all-ceramic crowns manufactured from silicate ceramic, zirconia-only or alumina-only ceramic cores
- orthodontic appliances

#### Advantages

- Excellent adhesion to the dental structure
- Precise marginal fit
- Moisture and acid resistant
- Long elastic phase for efficient excess removal
- Self-adhesive: secure and quick bonding without primer or conditioner
- Thixotropic: no unwanted run-off, no rotating instruments required
- Suited for high-strength zirconia ceramic pieces

#### Presentation

REF 1731	Powder 15 g
REF 1732	Liquid 10 ml
REF 1733	Application capsules 48 pcs.

## Aqua Meron



### Water-mixable glass ionomer luting cement



#### Indications

Luting of crowns, bridges, inlays, onlays, pins, posts and orthodontic bands

#### Advantages

- Good flowability
- Low solubility in the mouth
- Low acid stress
- Biocompatible

#### Presentation

REF 1172	Powder 35 g with dropping bottle
----------	----------------------------------

## Meron Application capsule



### Radiopaque glass ionomer luting cement



#### Indications

- Luting of metal-based crowns, bridges, inlays and onlays
- Luting of high-strength all-ceramic crowns and bridges
- Luting of metal-based and high-strength all-ceramic crowns and bridges on implant abutments
- Luting of metal root posts or indirect metal post core build-ups
- Luting of prefabricated steel crowns
- Luting of orthodontic bands

#### Advantages

- Sizeable amount available per capsule – also suitable for large restorations
- Very good wetting behaviour
- Stable
- Low film thickness
- High level of translucency for aesthetic results
- Simple removal of excess material
- Continuous release of fluoride
- No known postoperative sensitivities

#### Now in the new application capsule

- Activated quickly and simply, without activator
- Mix, open cannula and use immediately with an applicator
- Fits all conventional applicators



## Meron



### Glass ionomer luting cement



#### Indications

- Luting of crowns, bridges, inlays, onlays, pins, posts and orthodontic bands

#### Advantages

- Low solubility in the mouth
- Low acidity
- Biocompatible
- Easy application
- Continuous release of fluoride

#### Presentation

REF 1242 Application capsules 50 pcs.

#### Presentation

REF 1086 Set powder / liquid (35 g / 15 ml)  
REF 1090 Set mini powder / liquid (15 g / 7 ml)

## Fit Test® C & B



**Addition-curing silicone material for checking of prosthetic reconstructions**

auto  
mix

### Indications

Control of precision of fit, marginal adaptation and marginal gaps of:

- full or partial crowns as well as bridges
- inlays / onlays
- cast post abutments / post crowns
- metal denture bases
- implant-supported crowns and bridges
- attachments and other secondary parts of dentures

### Advantages

- Fast diagnostic help for all restorative pieces
- QuickMix syringe for simple handling – automatic bubble-free mixing
- Direct application
- Optimal colour for metal and ceramic restorations
- Fast results due to short working and setting time

## Ceramic Bond



**Coupling agent for porcelain (incl. zirconia) and composite**

Ceramic

Composite

### Indications

One-component silanisation agent for durable adhesive bonding of porcelain, also zirconia, to composites as well as for the pre-treatment of glass fibre reinforced composite posts

### Advantages

- Silanates the surfaces of full ceramic restorations and creates ideal conditions for a durable bond between ceramic, as well as zirconia and composite

**Also for zirconia**

#### Presentation

REF 2095 QuickMix syringe 5 ml, mixing tips type 9

#### Presentation

REF 1106 Bottle 5 ml



## Quick Up®



Self-curing luting material for attachments and secondary denture parts



auto  
mix

for  
implants

### Indications

Gingiva-coloured composite for luting attachments, such as ball, Locator® and telescope retention elements in prostheses with plastic bases

Reluting secondary elements in prostheses with plastic bases, e.g., connecting bars

Locator® is not a registered trademark of VOCO GmbH.

### Advantages

- Very simple chairside use
- High strength values
- Complete set for immediate use, including checking and blockout material for primary structures that require protection, e.g., implants
- Ideal combination of self-curing luting material and light-curing correction material

### Application



Implant with fitted attachments



Prosthetic base with the recesses for the attachments already created



Checking the accuracy of the fit with Fit Test C & B



Checking of attachments for fitting accuracy with Fit Test C & B



Blocking-out, covering of primary parts / gingiva with Fit Test C & B



Applying Quick Up from the QuickMix syringe



Applying Quick Up LC to correct deficits and superficial defects



Luted attachment in the prosthesis

### Presentation

REF 1625	Set QuickMix syringe 7.5 g, Quick Up LC syringe 2 g, adhesive bottle 4 ml, Fit Test C & B QuickMix syringe 5 ml, accessories
REF 1626	QuickMix syringe 7.5 g, accessories
REF 1627	Quick Up LC syringe 2 g, accessories

# Rebilda® DC



Dual-curing flowable core build-up and post luting system

70 % w/w

250% radiopacity

40 sec light-curing

DC dual-curing

auto mix

3 shades

### Indications

Adhesive core build-up on vital and non-vital teeth  
Luting of fibre-reinforced resin posts

### Advantages

- Light-curing for time-saving application
- Additional chemical curing for reliable processing
- Available in 10 g QuickMix syringes and 50 g cartridge
- In three shades: *blue* for easy identification of preparation margins, *dentine* for aesthetic reasons, *white* as an aesthetic contrast to dentine
- Optimised small mixing tips save material
- Low heat development even in bulk application
- Flowable – packing is obsolete
- Safe adhesion with system bond
- Easy access of posterior areas with intraoral tips

Presentation			
REF 1395	Set cartridge 50 g dentine, Futurabond DC bottle 4 ml each liquid 1 and 2, mixing tips type 12, dispenser type 3, intraoral tips type 3, accessories	REF 1402	Set QuickMix syringe 10 g dentine, Futurabond DC bottle 4 ml each liquid 1 and 2, mixing tips type 11, intraoral tips type 4, accessories
REF 1396	Cartridge 50 g dentine, mixing tips type 12, intraoral tips type 3	REF 1403	QuickMix syringe 10 g dentine, mixing tips type 11, intraoral tips type 4
REF 1397	Cartridge 50 g blue, mixing tips type 12, intraoral tips type 3	REF 1404	QuickMix syringe 10 g blue, mixing tips type 11, intraoral tips type 4
REF 1398	Cartridge 50 g white, mixing tips type 12, intraoral tips type 3	REF 1405	QuickMix syringe 10 g white, mixing tips type 11, intraoral tips type 4

# Rebilda® Post / Rebilda® Post System



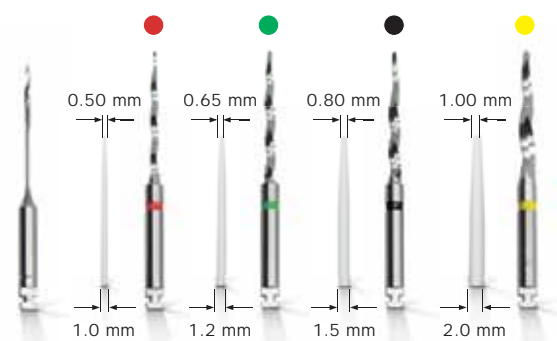
Glassfibre-reinforced composite post / Adhesive core build-up system

## Indications

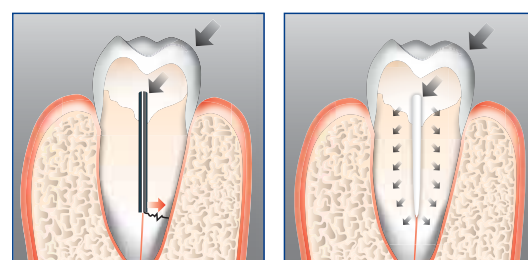
Endodontic post build-up for support and anchoring of coronal restoration in situations with insufficient tooth substance

## Advantages

- Dentine-like elasticity behaviour, high transverse strength
- High radiopacity (350 %Al)
- Anatomical shape
- Adhesive luting
- Removable
- All materials in the set match each other
- Post insertion and core-build-up in one step
- **Futurabond® DC**
  - safe self-cure
  - high adhesion without additional etching
- **Rebilda® DC**
  - suitable for post luting
  - cuts like dentine, very good physical properties
  - low setting temperature



Posts illustrations are not the actual size. ø 1.0 mm is not included in the set.



Metal post – rootfractures

Rebilda Post – dentine-like E-modulus

## Presentation

### Rebilda® Post

REF 1770	Set 5 posts each of (ø 1.2 mm, ø 1.5 mm, ø 2.0 mm), 1 drill each of (ø 1.2 mm, ø 1.5 mm, ø 2.0 mm)
REF 1775	Post 10 (ø 1.0 mm), 5 pcs.
REF 1772	Post 12 (ø 1.2 mm), 5 pcs.
REF 1773	Post 15 (ø 1.5 mm), 5 pcs.
REF 1774	Post 20 (ø 2.0 mm), 5 pcs.
REF 1780	Drill 10 (ø 1.0 mm), 1 pc.
REF 1777	Drill 12 (ø 1.2 mm), 1 pc.
REF 1778	Drill 15 (ø 1.5 mm), 1 pc.
REF 1779	Drill 20 (ø 2.0 mm), 1 pc.
REF 1769	Reamer (ø 0.7 mm), 3 pcs.

### Rebilda® Post System

REF 1771	Set 5 posts each of (ø 1.2 mm, ø 1.5 mm, ø 2.0 mm), 1 drill each of (ø 1.2 mm, ø 1.5 mm, ø 2.0 mm), 1 reamer (ø 0.7 mm), Ceramic Bond bottle 5 ml, Futurabond DC <i>SingleDose</i> 15 pcs., Rebilda DC dentine QuickMix syringe 10 g, accessories
----------	---

## Rebilda® SC



**Composite based self-curing flowable adhesive core build-up system**



### Indications

Adhesive core build-up on vital and non-vital teeth

### Advantages

- Convenient and fast application
- Low heat development even in bulk application
- High adhesion with system bond – fewer parapulpal pins
- In two shades: blue and dentine
- Toothlike surface hardness – cuts like dentine
- High radiopacity
- Economical with shorter mixing tips

#### Presentation

REF 1622	Cartridge 50 g dentine, mixing tips type 12
REF 1623	Cartridge 50 g blue, mixing tips type 12

## Rebilda® LC



**Light-curing adhesive core build-up system**



### Indications

Smaller core build-up  
Reconstruction of edges and corners  
Build-up in layer technique

### Advantages

- Light-curing
- Time saving – no mixing

#### Presentation

REF 1505	Syringe 2 × 5 g blue
REF 1506	Syringe 2 × 5 g dentine

## Rebilda® Form



**Moulds for adhesive core build-up**

### Indications

Shaping aids for adhesive core build-up in cases of severely damaged teeth with or without the use of an endodontic post

### Advantages

- Simple use with all composite core build-up materials
- Three surgery-oriented sizes
- Translucent for photopolymerisation
- The special shape provides quick adaptation to the tooth
- Does not bond to standard composite materials

#### Presentation

REF 1407	20 pcs. small
REF 1408	20 pcs. medium
REF 1409	20 pcs. large

## Grandio® Core Dual Cure

NEW



Flowable dual-curing nano-hybrid core build-up material



## Indications

Core build-up, for vital as well as non-vital teeth  
Luting of root posts

## Advantages

- Outstanding physical properties for durable core build-ups
- Filler content of 77 % w/w
- Nano-hybrid technology
- In three shades: dentine, blue and white
- QuickMix syringe to ensure optimal application and consistent mixing ratio
- Flowable
- With intraoral tips type 4 for convenient application

Now also  
available in the  
53 g cartridge

## Presentation

REF 1910	QuickMix syringe 10 g dentine, mixing tips type 11, intraoral tips type 4
REF 1911	QuickMix syringe 10 g blue, mixing tips type 11, intraoral tips type 4
REF 1912	QuickMix syringe 10 g white, mixing tips type 11, intraoral tips type 4
REF 1913	Cartridge 53 g dentine, mixing tips type 12, intraoral tips type 3
REF 1914	Cartridge 53 g blue, mixing tips type 12, intraoral tips type 3
REF 1915	Cartridge 53 g white, mixing tips type 12, intraoral tips type 3

# Structur Premium



Highly aesthetic composite material for the fabrication of provisional crowns and bridges

SC  
self-curing

auto  
mix

semi-  
perma-  
nent

Long-term  
temporaries

8  
shades

### Indications

Universal use for highly aesthetic temporary crowns and bridges, inlays and onlays for the most ambitious demands

### Advantages

- Special incisal shade facilitates the fabrication of temporaries in two-layer technique
- Aesthetic like porcelain
- High stability of shape and shade
- Natural fluorescence
- Brilliant gloss
- As hard as enamel
- Extremely high fracture resistance
- Perfect handling
- Convenient work steps, easy to trim and polish
- Long-term use of temporary possible
- Very economical due to minimal material loss

Presentation							
REF 1710      Set cartridge 75 g A3, dispenser type 2, mixing tips type 6							
Shade	Cartridge 75 g, mixing tips type 6	Cartridge 5 × 75 g, mixing tips type 6	QuickMix syringe 8 g, mixing tips type 10	Shade	Cartridge 75 g, mixing tips type 6	Cartridge 5 × 75 g, mixing tips type 6	QuickMix syringe 8 g, mixing tips type 10
A1	REF 1712	–	–	B1	REF 1718	–	–
A2	REF 1713	–	–	B3	REF 1715	–	–
A3	REF 1714	REF 1719	–	BL	REF 1716	–	–
A3.5	REF 1717	–	–	I	–	–	REF 1726



## Structur 3



Self-curing composite material for the fabrication of provisional crowns and bridges



**SC**  
self-curing

**auto**  
mix

**no**  
polishing

**semi-**  
perma-  
nent

**Long-term**  
temporaries

**8**  
shades

### Indications

Fabrication of temporary crowns, bridges, inlays, onlays, partial crowns, veneers and temporary posts

Fabrication of long-term temporaries

Lining of pre-fabricated temporary crowns made from composite materials, polycarbonate or metal

### Advantages

- **Processing**
  - quick, simple and reliable thanks to the 1:1 cartridge system
  - short setting time
  - elastic phase allows simple removal from the prepared tooth
  - gloss without polishing – only requires removal of the inhibition layer
- **Aesthetics**
  - natural gloss and fluorescence
  - available in 8 shades
- **Durability**
  - high compressive strength
  - excellent fracture resistance

**GLOSS WITHOUT  
POLISHING!**

### Clinical Case



Initial situation



Prepared cores



Finished temporary bridge



Appealing result

Source: Dr. Walter Denner, Fulda / Germany

### Presentation

REF 2500 Set cartridge 50 ml A2, dispenser type 2, mixing tips type 6

REF 2501 Set cartridge 50 ml A3, dispenser type 2, mixing tips type 6

Shade	Cartridge 50 ml, mixing tips type 6	Cartridge 5 × 50 ml, mixing tips type 6	QuickMix syringe 5 ml, mixing tips type 10	Shade	Cartridge 50 ml, mixing tips type 6	Cartridge 5 × 50 ml, mixing tips type 6	QuickMix syringe 5 ml, mixing tips type 10
A1	REF 2503	–	REF 2515	B1	REF 2507	–	REF 2518
A2	REF 2504	REF 2512	REF 2516	B3	REF 2508	–	–
A3	REF 2505	REF 2513	REF 2517	C2	REF 2509	–	–
A3.5	REF 2506	–	–	BL	REF 2510	–	–

# Structur 2



Self-curing composite material for the fabrication of provisional crowns and bridges

SC  
self-curing

auto  
mix

semi-  
perma-  
nent

8  
shades

## Indications

Fabrication of aesthetic temporary crowns, bridges, inlays and onlays

## Advantages

- Simple and fast working steps
- Less than 1 minute setting time in the mouth
- Easy to shape and polish
- Available in 8 shades for natural aesthetics
- Long-lasting temporaries
- High stability of shape and shade
- Very economical due to minimal material loss
- Natural fluorescence

## Presentation

REF 1478 Set cartridge 75 g A3, dispenser type 2, mixing tips type 6

Shade	Cartridge 75 g, mixing tips type 6	Cartridge 5 × 75 g, mixing tips type 6	QuickMix syringe 8 g, mixing tips type 10	Shade	Cartridge 75 g, mixing tips type 6	Cartridge 5 × 75 g, mixing tips type 6	QuickMix syringe 8 g, mixing tips type 10
A1	REF 1479	–	REF 1309	B1	REF 1482	–	REF 1312
A2	REF 1480	REF 1492	REF 1310	B3	REF 1483	–	–
A3	REF 1481	REF 1491	REF 1311	C2	REF 1486	–	–
A3.5	REF 1490	–	–	BL	REF 1485	–	–

## Provicol® QM



**Eugenol-free temporary luting cement with calcium hydroxide**



### Indications

Temporary luting of inlays, onlays, crowns, partial crowns, bridges, attachments and posts

Temporary filling of small cavities

### Advantages

- Fast application without mixing
- Bubble-free perfect mixing
- Direct application
- Further advantages: see Provicol C

### Presentation

REF 1074 QuickMix syringe 5 ml, mixing tips type 10

## Provicol® C



**Proven Provicol in cartridges**



### Indications

See Provicol QM

### Advantages

- Semi-elastic properties for safe adhesion of the temporary
- Calcium hydroxide
  - supports the formation of secondary dentine
  - bacteriostatic
- Eugenol-free, thus low allergy potential
- Ideal before adhesive luting with resin cements, because no inhibition of curing reaction of resin-based filling or luting materials

### Presentation

REF 1076 Cartridge 2 × 65 g, mixing tips type 6

## Provicol®



**Proven Provicol in handmix version**



### Indications

See Provicol QM

### Advantages

See Provicol C

### Presentation

REF 1075 Tube 2 × 25 g (base / catalyst)  
REF 1078 Tube 10 × 25 g (base / catalyst)

## Clip®



Light-curing one-component filling material for temporary restorations

semi-permanent

20-40 sec  
light-curing

Saliva-proof

### Indications

Temporary fillings

Temporary sealing of cavities, especially in inlay / onlay technique

### Advantages

- Easy to place – easy to remove in one piece
- No damage to preparation boundaries
- Time-saving and economical
- Tight margins and durable
- Specifically useful in inlay / onlay technique
- Saliva-proof



Easy to remove in one piece

Source: Dr. Peter Bastobbe, Mainleus / Germany

### Presentation

REF 1284	Syringe 2 × 4 g
REF 1285	Syringe 3 × 4 g
REF 1287	Caps 25 × 0.25 g
REF 9301	Dispenser – Caps

## Clip® F



Light-curing one-component filling material with fluoride for temporary restorations

semi-permanent

contains fluoride

20-40 sec  
light-curing

Saliva-proof

### Indications

Temporary fillings

Temporary sealing of cavities, especially in inlay / onlay technique

### Advantages

- Easy to place – easy to remove in one piece
- No damage to preparation boundaries
- Time-saving and economical
- Tight margins and durable
- Specifically useful in inlay / onlay technique
- Saliva-proof

### Presentation

REF 1289	Syringe 2 × 4 g
REF 1283	Syringe 3 × 4 g

## Cimara®



Material for ceramic repair with light-curing composite



## Indications

Direct repair of ceramic restorations

## Advantages

- Only one session
- No removal or re-cementation of restorative pieces
- Simple working steps
- No additional devices required
- Permanent bond of composite to porcelain
- High shear bonding strength

ACID-FREE INTRAORAL  
CERAMIC REPAIR

## Application



## Cimara® Zircon



Zirconia repair material with light-curing composite



## Indications

For repairing defects on porcelain-faced, fixed, full ceramic restorations and zirconia-frames with composite

## Advantages

- High shear bond strength
- Highly aesthetic
- Inexpensive, direct repair in the patient's mouth
- Without acid use
- With light-curing, nano-hybrid composite GrandioSO for outstanding results

## Application



## Presentation

REF 1196	Set coupling silane 8 × 0.3 ml, adhesive bottle 4 ml, Opaquer LC syringe 1.2 g, GrandioSO Caps 8 × 0.25 g (A1, 2 × A2, 2 × A3, A3.5, B2, GA3.25), accessories
REF 1197	Coupling silane 4 × 0.3 ml, accessories
REF 1198	Adhesive bottle 4 ml
REF 1575	Opaquer LC syringe 1.2 g, application cannulae type 45

## Presentation

REF 1421	Set primer bottle 5 ml, adhesive bottle 4 ml, GrandioSO Caps 8 × 0.25 g (A1, 2 × A2, 2 × A3, A3.5, B2, GA3.25), accessories
REF 1422	Primer bottle 5 ml

## Ufi Gel® hard C



### Hard direct denture relining

**SC**

self-curing

**auto  
mix**

#### Indications

Hard permanent relining  
Direct and indirect relining  
Total or partial relining  
Ambulant relining  
Lengthening of denture rims  
Repair and enlargement of dentures  
Correction of new dentures

## Ufi Gel® hard



### Handmix version of Ufi Gel® hard C

**SC**

self-curing

#### Advantages

- Complete, hard relining, in just one chairside session
- Methylmethacrylate-free
- Neutral taste and odour
- No heat development in the mouth
- Good colour stability
- As easy as taking an impression
- Aesthetic, high patient acceptance and comfort
- Smooth surface
- New layers can be added at any time

### Clinical Case



GRINDING OF  
EXCESS



#### Presentation

REF 2215	Set cartridge 80 g, adhesive bottle 10 ml, mixing tips type 8
REF 2218	Set + dispenser cartridge 80 g, adhesive bottle 10 ml, mixing tips type 8
REF 2216	Cartridge 80 g, mixing tips type 8
REF 2217	Adhesive bottle 10 ml

#### Presentation

REF 2210	Set powder 60 g, liquid bottle 40 ml, conditioner bottle 20 ml, accessories
REF 2211	Powder 60 g
REF 2212	Liquid bottle 40 ml
REF 2213	Conditioner bottle 20 ml



## Ufi Gel® SC



Permanently soft, cold-curing relining material on silicone base in cartridges

SC

self-curing

auto  
mix

## Indications

Permanently soft relining for total and partial dentures

- to eliminate pressure spots
- to dam the palatal vibrating line
- in cases of flabby ridges and/or insufficient adhesion
- to cushion sharp-edged alveolar processes
- to support the healing process in implantology

## Clinical Case



SEATING OF THE  
PROSTHESIS AND  
MOVEMENTS OF  
THE MANDIBLE



## Ufi Gel® P



Permanently soft, cold-curing relining material on silicone base in tubes

SC

self-curing

## Advantages

- Top quality relining silicone
- Complete relining in one single session (chairside)
- Remains permanently soft
- Special adhesive for extreme bonding of silicone to denture
- Biocompatible (methacrylate-free)
- Neutral odour and taste
- Stable, aesthetic colour with chameleon effect
- Laboratory use: fewer steps than with other cold-cured materials
- For all PMMA based dentures
- Easy and fast application of direct and indirect relining
- Excellent adaptation to fine details for a precise fit of the denture
- Resistant against standard denture cleansers

## Presentation

REF 2041	Set cartridge 50 ml, adhesive bottle 10 ml, glazing base 10 ml, glazing catalyst 10 ml, mixing tips type 8
REF 2040	Cartridge 50 ml, mixing tips type 8
REF 2029	Adhesive bottle 10 ml
REF 2047	Glazing bottle 20 ml
REF 2049	Polishing discs, 10 pcs.

## Presentation

REF 2070	Set tube base 50 ml, catalyst 50 ml, glazing base 10 ml, glazing catalyst 10 ml, adhesive bottle 10 ml, accessories
REF 2071	Tube 2 × 50 ml (base / catalyst)
REF 2076	Adhesive bottle 10 ml
REF 2077	Glazing bottle 20 ml

## Registrado® X-tra



**Addition-curing silicone for bite registration, extra hard, fast setting**



### Indications

Occlusal bite registration  
Fixing facebow registrations  
Retaining gothic arch registrations  
Model fabrication for indirect composite restorations

### Advantages

- Optimised final hardness
- Allows application without time pressure
- Highly thixotropic qualities
- Good grinding properties
- Very precise impressions
- With economic mixing tips



## Registrado® Clear



**Transparent addition-curing silicone for bite registration, fast setting**



### Indications

Bite registration  
Registration key for intraoral bearing device registration  
Fixing of X-ray balls  
Front and occlusal record  
Silicone key for composite restorations

### Advantages

- High final hardness combined with high transparency
- Convincing material consistency, ensures adherence to the row of teeth
- Work without time pressure thanks to temperature-controlled curing process (accelerated curing starts only when mouth closed)
- High dimensional and shape stability (> 99 %)
- Simple working process, no risk of fracture
- Neutral in taste and odour
- Direct visual control of the intended occlusion
- Light-curing can be carried out perfectly through a layer of Registrado Clear
- Not radiopaque

### Presentation

REF 2035 Cartridge 2 × 50 ml, mixing tips type 16, intraoral tips type 2  
REF 2036 Cartridge 8 × 50 ml, mixing tips type 16, intraoral tips type 2

### Presentation

REF 2037 Cartridge 50 ml, mixing tips type 16, intraoral tips type 2



## VARIOUS PRODUCTS

Products and devices for your daily work.

VOCO supports you with a variety of products for daily clinical practice, such as cannulae of different shapes and sizes, to allow simple direct application. In this section you also find all devices necessary for the processing of VOCO dental materials, as well as cleansers and other practical helps for the dental clinic and the laboratory.

# Individo® Lux



Preformed individual impression trays, light-curing

3-5 min  
light-curing

### Indications

For the fabrication of individual trays from contoured plates for maxillae and mandibles

### Advantages

- In blue transparent or blue opaque colour
- Allows precise and economic processing
- Stable trays
- Pleasant mint flavour
- Non-sticky consistency
- Light-cured with standard halogen light or UVA lights

# Profibase



Preformed pink-impression trays / basis plates, light-curing

3-5 min  
light-curing

### Indications

Fabrication of gingiva shaded bases for wax models of complete and partial dentures

### Advantages

- Gingiva shade
- Simple and time-saving shaping by hand
- Permanent stability and compressive strength
- Pleasant mint flavour
- Non-sticky consistency
- Light-cured with standard halogen light or UVA lights

Presentation		Presentation	
REF 2402	Maxillae 50 pcs. blue opaque	REF 2111	Maxillae / mandibles 2 × 25 pcs.
REF 2403	Mandibles 50 pcs. blue opaque	REF 2112	Maxillae 50 pcs.
REF 2408	Maxillae 50 pcs. blue transparent	REF 2113	Mandibles 50 pcs.
REF 2409	Mandibles 50 pcs. blue transparent		

## Vococid®



Etchant for acid-etch-technique (contains phosphoric acid 35 %)

### Indications

Etching of enamel and dentine in the etch-bond technique

### Advantages

- Contains 35 % orthophosphoric acid
- Blue colour for visual control
- Non-dripping gel
- Also available as a liquid

## Caries Marker



Coloured solution for disclosing caries infections

### Indications

Dyeing of carious dentine to simplify cavity preparation and for demonstration purposes

### Advantages

- Precise distinction between carious and healthy dentine
- Supports minimally invasive restoration techniques
- Suited for training and teaching purposes on extracted teeth

#### Presentation

REF 1063	Syringe 5 ml, application cannulae type 42
REF 1066	Bottle 2 × 3 ml
REF 1224	Syringe 5 × 2 ml, application cannulae type 48

#### Presentation

REF 1005	Bottle 2 × 3 ml, accessories
----------	------------------------------

## Pele Tim



Foam pellets for application of liquid or paste preparations without pressure

### Indications

Touching of infected alveoli  
Endodrain  
Vitality test  
Removal of material excess from cementation or sealing  
Simple application, e.g., of fluoride preparations

### Advantages

- 5 practical sizes
- Painfree application without pressure
- Economical application
- Hygienic application without fluff



Pele Tim: available designs and sizes

## Block Out Gel LC



Light-curing block out material

10-30  
sec  
light-curing

### Indications

Blocking-out of plaster models

### Advantages

- Blue colour for simple application control
- Easy application directly from the syringe

### Presentation

REF 2250	No. 0	3.000 × ø 3 mm
REF 2252	No. 1	3.000 × ø 4 mm
REF 2253	No. 2	1.000 × ø 5 mm
REF 2254	No. 3	500 × ø 8 mm
REF 2255	No. 4	500 × 6 × 8 mm

### Presentation

REF 1661	Syringe 4 × 1.2 ml, application cannulae type 44
----------	--



## Traypurol® tabs



Active-tabs for cleaning impression trays and instruments

## Traypurol®



Concentrated cleaning agent for impression trays and instruments

## Solvitan



Cleaning solution with citrus aroma

### Indications

Self-acting cleaning of impression trays and instruments

### Advantages

- Removes alginates and cements within a short amount of time
- Especially easy to dose
- No vigorous stirring necessary – the tabs automatically dissolve when placed in water
- Gentle to material – suitable for all rustproof metals (including aluminium) and plastics
- Bio-degradable and pH-neutral
- Can be used in ultrasonic baths

### Indications

Self-acting cleaning of impression trays and instruments

### Advantages

- Simply diluted in water
- Removes residues of alginates, zinc oxide eugenol, glass ionomer, carboxylate and phosphate cements
- Cleans trays and instruments reliably overnight
- Can be used in ultrasonic devices
- Suited also for non-oxidising metals and plastic
- Biodegradable and gentle

### Indications

Cleaning solution for general application in dental clinics, laboratories and households

### Advantages

- Removes pastes, silicone- or polyether-based impression materials and zinc oxide from hands and instruments
- Skin-friendly with lanolin
- Easily removed with water
- Pleasant citrus fruit aroma

### Simple to use!



#### Presentation

REF 2355 50 pcs.

#### Presentation

REF 2289 Bottle 1 l  
REF 2290 Canister 5 l  
REF 2304 Dispenser pump – canister 5 l

#### Presentation

REF 2312 Bottle 250 ml  
REF 2313 Box bottle 4 × 250 ml  
REF 2320 Bottle 500 ml

## VOCO Mix 10



Capsule mixer for VOCO mixing and application capsules as well as for amalgam and similar capsules

### Advantages

- Sturdy design
- Low noise and low vibration
- Mixing times between 1 - 99 seconds
- Large display
- Mixing frequency: 4,300 oscillations / min. + / - 5 %

## Celalux® 2



High-Power LED curing-light

### Advantages

- Modern LED technology with high intensity (approx. 1,000 mW / cm<sup>2</sup>)
- Three pre-set curing times including soft-start option
- Easy to handle, cordless
- Ergonomic design, handpiece weighs only 160 g
- Light rod angled, amber-coloured, can be exchanged and autoclaved
- Wavelength range 420 - 480 nm
- Polymerisation of all light-curing dental materials based on camphoroquinone (bonds / adhesives, composites,Ormocer®s, compomers)
- Operating time: 300 × 20 s (100 min) with fully charged battery
- Battery easy to change
- Rechargeable battery

### Presentation

REF 9048	VOCO Mix 10 (220 - 240 V / 50 Hz)
REF 9049	VOCO Mix 10 (110 V)

### Presentation

REF 9080	Celalux 2 (handpiece with protective cap and LED, battery charger with integrated wattmeter, mains adapter, lithium-ion battery, amber-coloured light guide, 7.5 mm dia., 45° angled, 2 × anti-glare shields, user manual)
----------	--

### Accessories

REF 9081	Angled light guide, 45°, 7.5 mm dia., amber-coloured, autoclavable
REF 9082	Device base incl. lithium-ion accumulator, capacity: 2,000 mAh
REF 9083	Anti-glare shields Celalux 2, 5 pieces
REF 9084	Angled light guide, 45°, 7.5 mm dia., white, for higher output (approx. 1,500 mW / cm <sup>2</sup> ), autoclavable

## Caps Dispenser



### Direct application dispenser for dispensing restorative materials in Caps

E.g. Clip, Arabesk Top, Arabesk Flow, Admira, Admira Flow, Twinky Star, Glasiosite, Grandio, Grandio Flow, x-tra fil, Amaris, GrandioSO, GrandioSO Heavy Flow, GrandioSO Flow and x-tra base

#### Presentation

REF 9301 Dispenser – Caps

## Dispenser type 2



### Dispenser to extrude dental materials from cartridges

For 1:1 or 1:2 cartridges (50 ml), i.e. for Registrado Clear, Registrado X-tra, Ufi Gel SC, Ufi Gel hard C, Structur 2, Structur 3, Structur Premium, Provicol C, etc.

#### Presentation

REF 2158 Dispenser – type 2

## Dispenser type 3



### Dispenser to extrude dental materials from cartridges

For 1:1 or 1:2 cartridges (25 ml), i.e. Rebilda SC, Rebilda DC and Grandio Core Dual Cure, etc.

#### Presentation

REF 2259 Dispenser – type 3

## AC Activator



Device to activate VOCO application capsules (AC)

#### Presentation

REF 9300 Activator – AC

## AC Applicator type 1



Forceps-type applicator to directly apply the content of VOCO application capsules (AC) into the cavity

#### Presentation

REF 2331 Applicator – AC type 1

## AC Applicator type 2



Dispenser for application capsules

#### Presentation

REF 2334 Applicator – AC type 2

## Application cannulae



REF 2145

Application cannulae type 40 for Fissurit F / FX, 100 pcs.



REF 2146

Application cannulae type 41 for Ionoseal, Calcimol LC, Grandio / SO Flow, Bifix QM Try-In, LC Dam, 100 pcs.



REF 2310

Application cannulae type 42 for Vococid, 30 pcs.



REF 2144

Application cannulae type 44 for Admira Flow, Amaris Flow, Arabesk Flow, Block Out Gel LC, Quick Up LC, Twinky Star Flow, 100 pcs.



REF 2147

Application cannulae type 45 for Amaris Gingiva, Grandio Seal, Cimara Opaquer LC, Control Seal, 100 pcs.



REF 2148

Application cannulae type 46 for GrandioSO Heavy Flow, x-tra base, 100 pcs.



REF 2131

Application cannulae type 47 for Calcicur, 30 pcs.



REF 2132

Application cannulae type 48 for Vococid, 50 pcs.

## Application aids



REF 2169

VOCO Trifill instrument, 10 pcs.



REF 2249

Micro Tim, fine application brushes, 100 pcs.



REF 2309

Disposable brushes for dental brush holder, 100 pcs.



REF 2338

Brush holder for VOCO disposable dental brushes and Micro Tim, 5 pcs.



REF 2247

Single Tim, application brushes for Futurabond U / M / NR / DC *SingleDose*, 100 pcs.



REF 2246

Endo Tim, application brushes, to be used in the root canal, 50 pcs.



REF 2245

Easy Brush, application brushes, 50 pcs.

## Mixing tips



REF 2185

Mixing tips type 6 for Provicol C, Structur 2 in cartridge, Structur 3 in cartridge, Structur Premium in cartridge, 50 pcs.



REF 2187

Mixing tips type 8 for Ufi Gel SC, Ufi Gel hard C, 50 pcs.



REF 2188

Mixing tips type 9 for Fit Test C & B, 50 pcs.



REF 2189

Mixing tips type 10 for Provicol QM, Structur 2 in the QuickMix syringe, Structur 3 in the QuickMix syringe, Structur Premium in the QuickMix syringe, Quick Up, 50 pcs.



REF 2191

Mixing tips type 11 for Rebilda DC in the QuickMix syringe, Bifix QM, Grandio Core Dual Cure in the QuickMix syringe, Fit Test C & B only with intraoral tips type 1, 50 pcs.



REF 2192

Mixing tips type 12 for Rebilda DC in cartridge, Grandio Core Dual Cure in cartridge, Rebilda SC, 50 pcs.



REF 2194

Mixing tips type 14 for Bifix SE, Perfect Bleach Office+, 50 pcs.



REF 2195

Mixing tips type 15 (with intraoral tips type 1), for Bifix SE, Perfect Bleach Office+, 50 pcs.



REF 2196

Mixing tips type 16 (for intraoral tips type 2) for Registrado Clear, Registrado X-tra, 50 pcs.



REF 2199

Mixing tips type 19 for Rebilda DC in cartridge, Grandio Core Dual Cure in cartridge, bendable, 30 pcs.



REF 2202

Mixing tips type 20 for die silicone, 50 pcs.

## Intraoral tips / Mixing spatulas / Mixing pads



REF 2139

Intraoral tips type 1 for Perfect Bleach Office+, to be used in the root canal by Rebilda DC in the QuickMix syringe, Bifix SE, Bifix QM, 50 pcs.



REF 2140

Intraoral tips type 2 for Registrado Clear, Registrado X-tra, 50 pcs.



REF 2141

Intraoral tips type 3 for Rebilda SC, Rebilda DC in cartridge, Grandio Core Dual Cure in cartridge, 50 pcs.



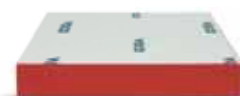
REF 2142

Intraoral tips type 4 for Rebilda DC in the QuickMix syringe, Bifix QM, Grandio Core Dual Cure in the QuickMix syringe, 50 pcs.



REF 2168

VOCO mixing spatula for cements, 20 pcs.



REF 2303

Mixing pads 70 × 80 mm, with adhesive back, 4 pcs.

[illegible]



**A**

AC Activator	71
AC Applicator	71
Admira	28
Admira Bond	29
Admira Flow	29
Admira Protect	13
Alfacomp LC	32
Amalgam Liner	17
Amaris	26
Amaris Flow	27
Amaris Gingiva	27
Aqua Ionofil Plus	38
Aqua Meron	48
Arabesk	31
Arabesk Flow	31
Arabesk Top	30
Argion	39
Argion Molar AC	39

**B**

Bifix QM	47
Bifix SE	46
Bifluorid 10	12
Block Out Gel LC	68

**C**

Calcicur	18
Calcimol	16
Calcimol LC	16
Caps Dispenser	71
Caries Marker	67
Celalux 2	70
Ceramic Bond	50
Cimara	61
Cimara Zircon	61
CleanJoy	14

Clip	60
Clip F	60
Control Seal	10
Curvy	34

**D**

Dimanto	34
Dispenser	71
Disposable articles	72 / 73

**E**

Easy Glaze	35
------------	----

**F**

Final Varnish LC	38
Fissurit	8
Fissurit F	8
Fissurit FX	8
Fit Test C & B	50
Futurabond DC	42
Futurabond M	43
Futurabond NR	43
Futurabond U	41

**G**

Glasiosite	33
Grandio	24
Grandio Core Dual Cure	55
Grandio Flow	25
Grandio Seal	9
GrandioSO	20
GrandioSO Flow	21
GrandioSO Heavy Flow	22
GrandioSO Inlay System	23
GrandTEC	40

**I**

Individo Lux	66
Ionobond	18
Ionofil Plus	37
Ionolux	35
Ionoseal	17

**K**

Klint	14
-------	----

**M**

Meron	49
Meron Application capsule	49
Meron Plus	48

**P**

Pele Tim	68
Perfect Bleach	6
Perfect Bleach Office+	7
Polofil Supra	30
Profibase	66
Provicol	59
Provicol C	59
Provicol QM	59

**Q**

Quick Up	51
----------	----

**R**

Rebilda DC	52
Rebilda Form	54
Rebilda LC	54
Rebilda Post	53
Rebilda Post System	53
Rebilda SC	54
Registrado Clear	64

Registrado X-tra	64
Remin Pro	13

**S**

Solobond M	44
Solobond Plus	44
Solvitan	69
Structur 2	58
Structur 3	57
Structur Premium	56

**T**

Traypurol	69
Traypurol tabs	69
Twinky Star	33
Twinky Star Flow	33

**U**

Ufi Gel hard	62
Ufi Gel hard C	62
Ufi Gel P	63
Ufi Gel SC	63

**V**

Vococid	67
VOCO Ionofil Molar	37
VOCO Ionofil Molar AC	36
VOCO Ionofil Molar AC Quick	36
VOCO Mix 10	70
VOCO Profluorid Varnish	11

**X**

x-tra base	19
x-tra fil	32

---

VOCO GmbH  
Anton-Flettner-Straße 1-3  
27472 Cuxhaven  
Germany

Tel.: +49 (0)4721-719-0  
Fax: +49 (0)4721-719-140

[info@voco.com](mailto:info@voco.com)  
[www.voco.com](http://www.voco.com)